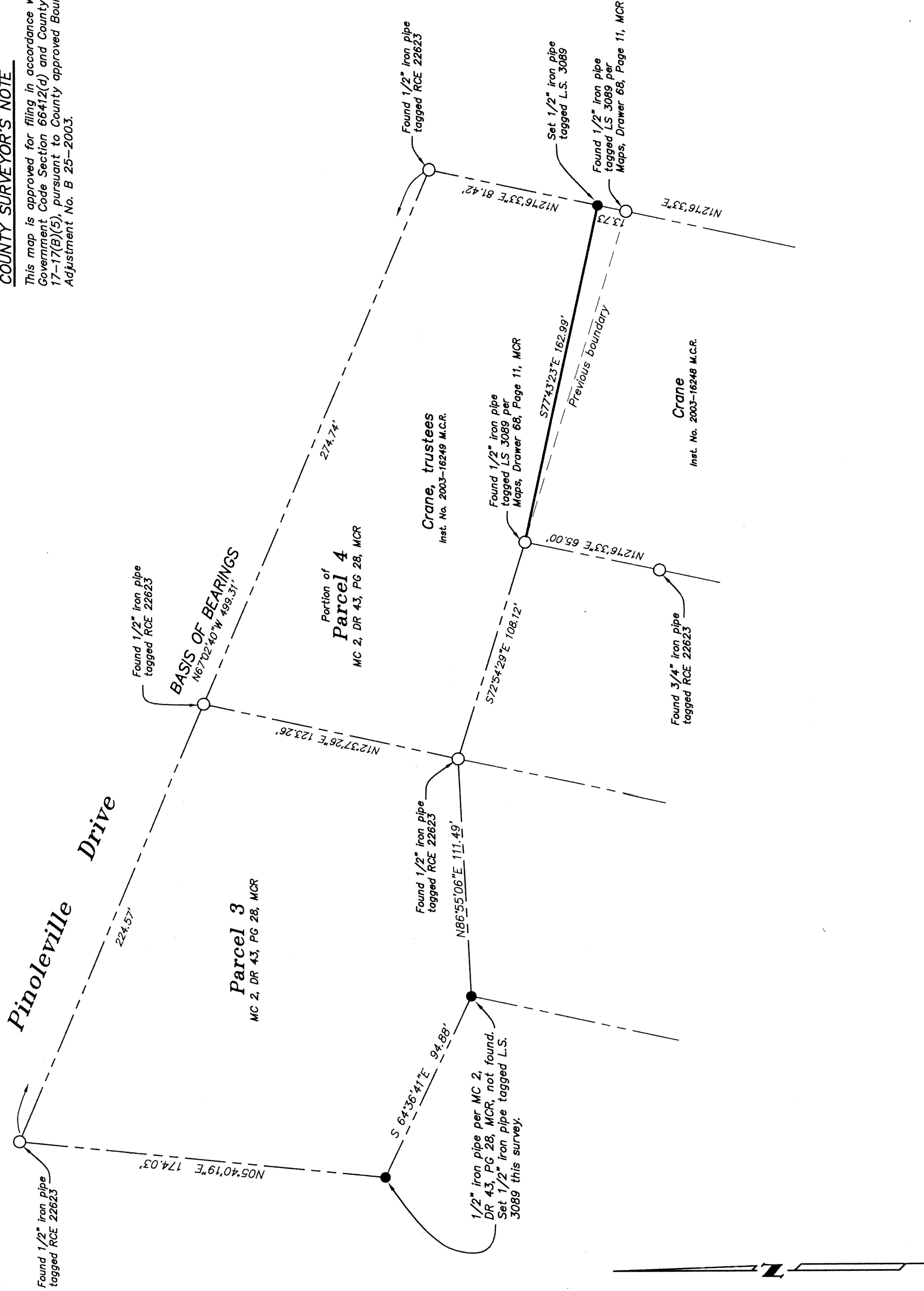


COUNTY SURVEYOR'S NOTE

This map is approved for filing in accordance with California Government Code Section 66412(d) and County Code Section 17-17(B)(5), pursuant to County approved Boundary Line Adjustment No. B 25-2003.

NOTE:

This map constitutes a boundary line survey only and does not show rights of way, easements, or encroachments, other than those indicated.

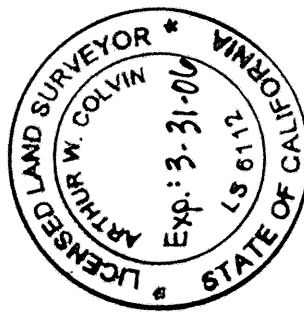


COUNTY SURVEYOR'S STATEMENT

This map has been examined in accordance with section 8766 of the Professional Land Surveyor's Act this 19TH day of AUGUST, 2003.

Arthur W. Colvin, County Surveyor
County of Mendocino, State of California

By: Arthur W. Colvin
Arthur W. Colvin, LS 6112
License Expires 3-31-06



RECORDER'S STATEMENT

Filed this 26TH day of AUGUST, 2003, at 9:08 A. M.
in Maps Drawer 70, Page 90, M.C.R.

at the request of Joseph J. Scherf

Marsha A. Wharff, County Recorder
Mendocino County, State of California

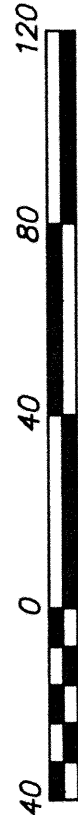
By: Joseph J. Scherf, Deputy

FEE: 8.00

RECORD OF SURVEY

BEING PORTIONS OF PARCELS 3 AND 4
AS SHOWN ON A MAP FILED IN MAP CASE 2,
DRAWER 43, PAGE 28, MENDOCINO COUNTY RECORDS
ALSO BEING A PORTION OF LOT 142, YOKAYO RANCHO

MENDOCINO COUNTY, CALIFORNIA
JUNE, 2003



#104

ONE SHEET ONLY

-- MAPS --

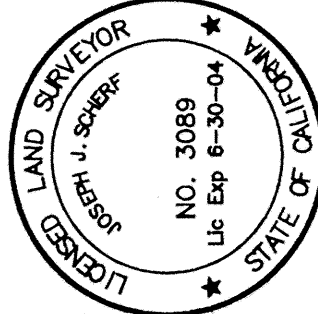
DRAWER 70

PAGE 90

SURVEYOR'S STATEMENT

This map correctly represents a survey made by me or under my direction in conformance with the requirements of the Professional Land Surveyor's Act at the request of Doug Crane in June, 2003.

Joseph J. Scherf
Joseph J. Scherf, LS 3089
License Expires 6-30-04



BASIS OF BEARINGS

South 67°02'40" East between found monuments along the north line of Parcels 3 and 4 as shown on the Parcel Map filed in Map Case 2, Drawer 43, Page 28, Mendocino County Records