

RECORD OF SURVEY 36-53

OF
PORTIONS OF SECTIONS 9, 15, AND 16 TOWNSHIP 4 SOUTH
RANGE 27 EAST MT. DIABLO MERIDIAN, IN THE COUNTY OF
MONO, STATE OF CALIFORNIA.

LEGEND

- DENOTES FO. STONE MOUND, SET 1" X 30" ALUMINUM PIPE WITH ALUMINUM CAP STAMPED LS 4813 UNLESS OTHERWISE NOTED. MS 793 AND 1061 INDICATE SET SCRIBED WOOD POSTS IN STONE MOUNDS.
- DENOTES SET 1" X 30" ALUMINUM PIPE WITH ALUMINUM CAP STAMPED LS 4813.
- () INDICATES RECORD DATA SHOWN ON OR CALCULATED FROM MS 793 AND MS 1061 UNLESS OTHERWISE NOTED.
- MS 793 REFERS TO THE ORIGINAL PATENT SURVEY OF THE HEAD-LIGHT MINE BY WM. MINTO, U.S. DEPUTY MINERAL SURVEYOR COMPLETED JUNE 7, 1878 (PATENTED 4-15-1881).
- MS 1061 REFERS TO THE ORIGINAL PATENT SURVEY OF THE MONTE CHRISTO MINE BY WM. S. LILLIE, U.S. DEPUTY MINERAL SURVEYOR COMPLETED JULY 9, 1879 (PATENTED 3-16-1882).
- BLM 1975 REFERS TO THE OFFICIAL U.S. GOVT. DEPENDENT RESURVEY OF A PORTION OF TOWNSHIP 4 SOUTH RANGE 27 EAST MON., PLAT APPROVED MARCH 4, 1975.
- ⊙ DENOTES FO. 2 1/2" PIPE WITH BLM BRASS CAP "1975"

SURVEYOR'S STATEMENT

THIS MAP CORRECTLY REPRESENTS A SURVEY MADE BY ME OR UNDER MY DIRECTION IN CONFORMANCE WITH THE REQUIREMENTS OF THE LAND SURVEYORS ACT AT THE REQUEST OF MAMMOTH LAKES MINING CORPORATION IN JUNE, 1988.



James A. Lapizza
JAMES A. LAPIZZA LS 4813
U.S. MINERAL SURVEYOR

COUNTY ENGINEER'S STATEMENT

THIS MAP HAS BEEN EXAMINED IN ACCORDANCE WITH SECTION 8766 OF THE LAND SURVEYORS ACT THIS 19 DAY OF OCTOBER, 1988.

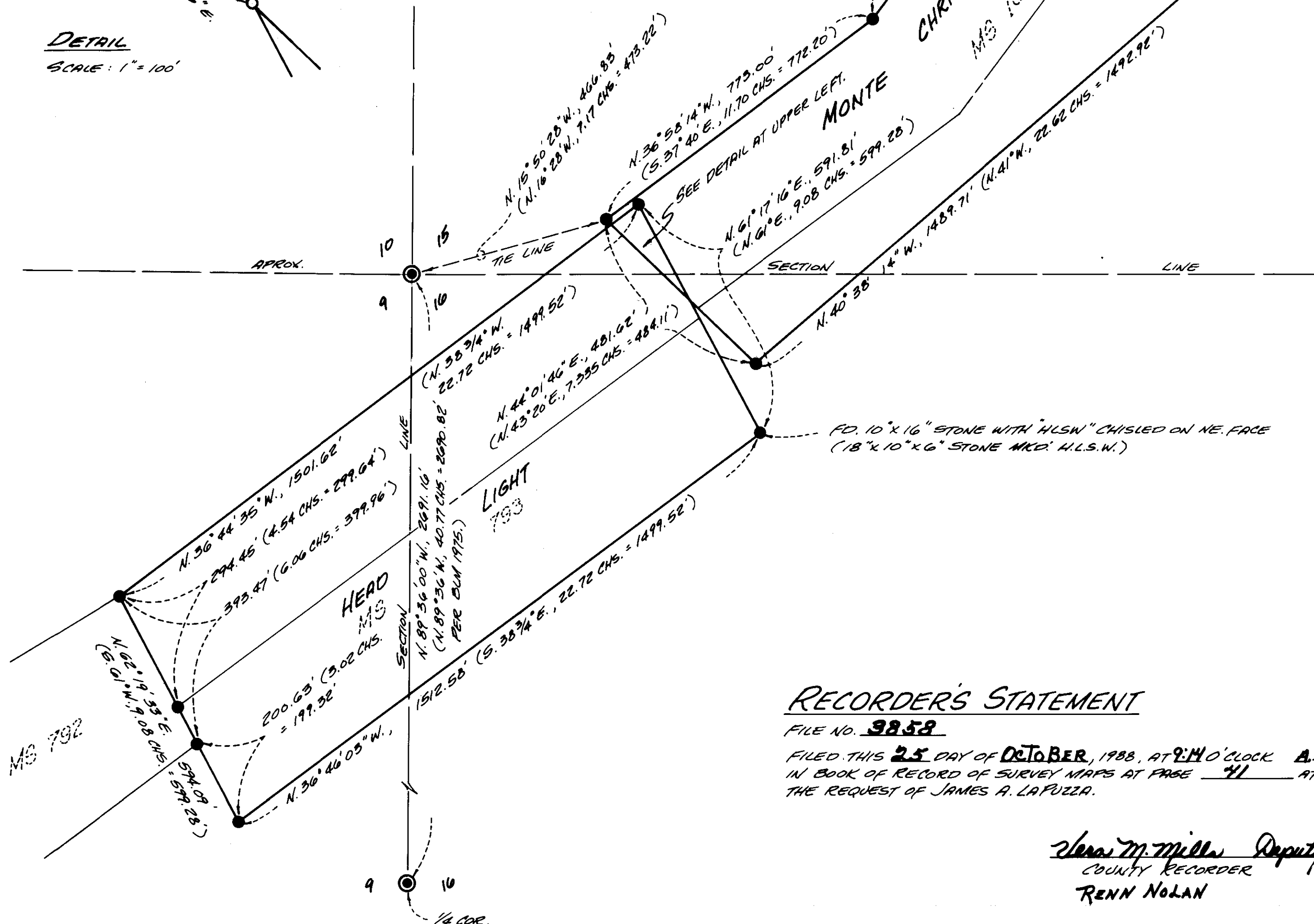
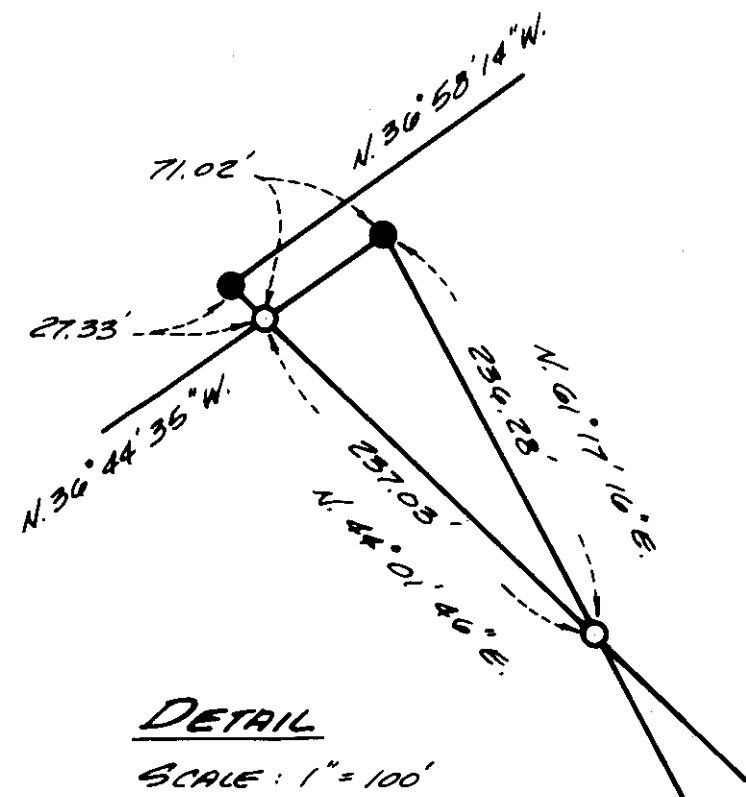
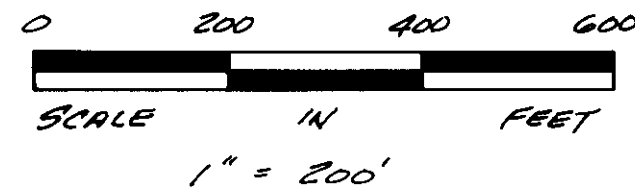
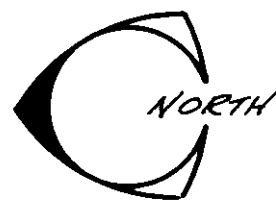


James M. Ward
COUNTY SURVEYOR
R.C.E. 22579

BASIS OF BEARINGS

THE SOUTHERLY LINE OF THE SE 1/4 SECTION 9 TOWNSHIP 4 SOUTH RANGE 27 EAST AS SHOWN ON THE OFFICIAL U.S. GOVT. 1975 DEPENDENT RESURVEY AS N. 89° 36' 00" W.

RE-ESTABLISHED ON
PARALLEL END LINE AT
RECORD DISTANCE
FROM END-CENTER.



RECORDER'S STATEMENT

FILE NO. **9858**

FILED THIS **25** DAY OF **OCTOBER**, 1988, AT **2:40** O'CLOCK **A.M.**
IN BOOK OF RECORD OF SURVEY MAPS AT PAGE **41** AT
THE REQUEST OF JAMES A. LAPUZZA.

Renn Nolan
COUNTY RECORDER
RENN NOLAN