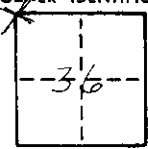


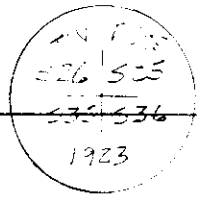
CORNER RECORD

COUNTY OF Mono T. 1N R. 29E 1000 E MERIDIAN CALIFORNIA
CORNER TYPE: GOV'T. CORNER ☒ MEANDER ☐ RANCHO ☐ CONTROL ☐ OTHER ☐
CORNER IDENTIFICATION — DATE OF VISIT Nov 16, 1976



CORNER — LEFT AS FOUND ☒ FOUND AND TAGGED ☐ REESTABLISHED OBLITERATED CORNER ☐ REBUILT ☐

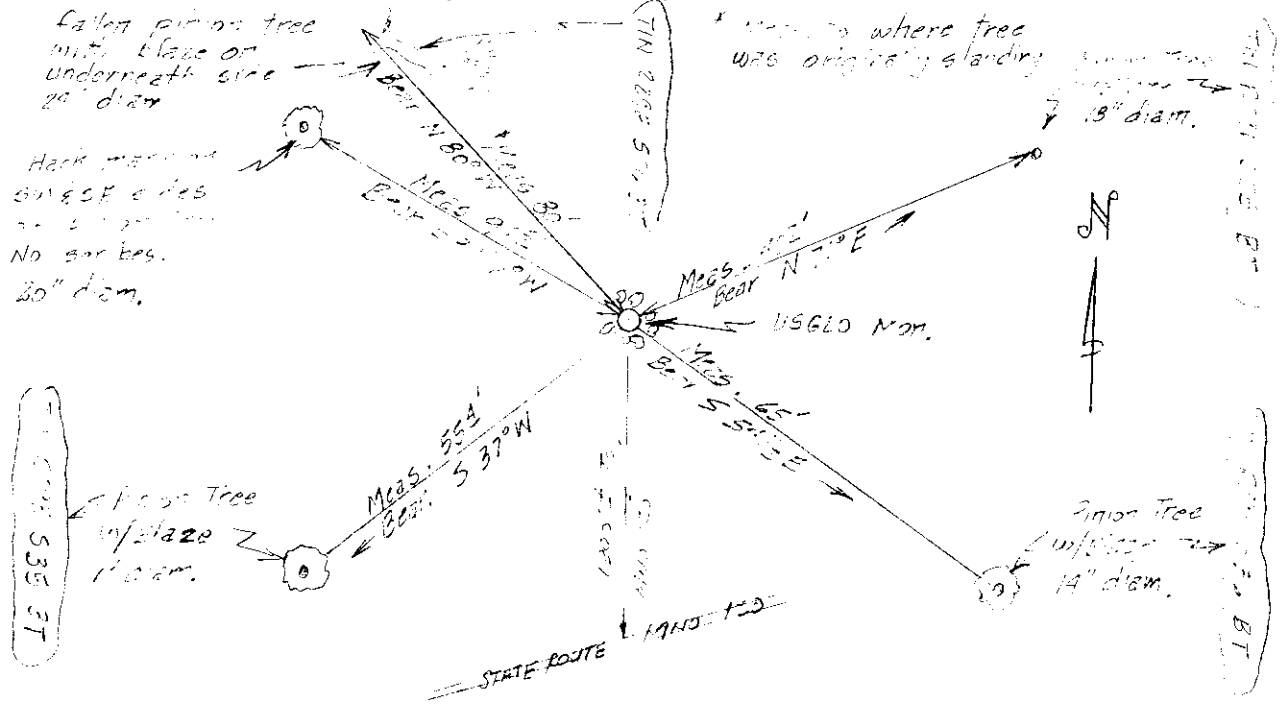
PHYSICAL DESCRIPTION OF CORNER FOUND; EVIDENCE AND METHOD USED TO IDENTIFY OR REESTABLISH
2 1/2" USGLO Brass cap riveted to a 2" pipe, up 1 1/2', w/ 3' diam. x 1' high mound of rocks around mon., w/ 1"x2" white witness post 2' south, stamped
with date 11-16-76 & initials JH
also found 2' from the corner a 1/2" x 1/2" x 1/2" white witness post
that pointed to the corner.



PHYSICAL DESCRIPTION OF MONUMENTS REBUILT OR PERPETUATED

CALIFORNIA COORDINATE SYSTEM ORDER: FIRST ☐ SECOND ☐ THIRD ☐
STATIONS USED: NGS (USC & GS) ☒ STATE ☒ COUNTY ☐ OTHER ☐ STATION _____ STATION _____
ZONE 3 ELEVATION _____ NORTHINGS (Y) 518,070.84 EASTINGS (X) 2,508,451.67

SKETCH: (Include reference tie or witness points, remarks and topo of area)



SURVEYOR'S CERTIFICATE
THIS CORNER RECORD WAS PREPARED BY ME OR UNDER MY DIRECTION IN CONFORMANCE WITH THE LAND SURVEYORS ACT ON November 16, 1976
SIGNED: [Signature]
L.S. or R.C.E. No.: [Signature]
KC Pub. Wks. #68 (9-74) SEAL

COUNTY SURVEYOR'S CERTIFICATE
THE CORNER RECORD WAS RECEIVED Nov 16, 1976
AND EXAMINED AND FILED Nov 16, 1976
BY: [Signature]
TITLE: 1N 29-36-4
DOCUMENT No. 1N 29-36-4
STATEMENT ON BACK OF SHEET YES ☐ NO ☐