

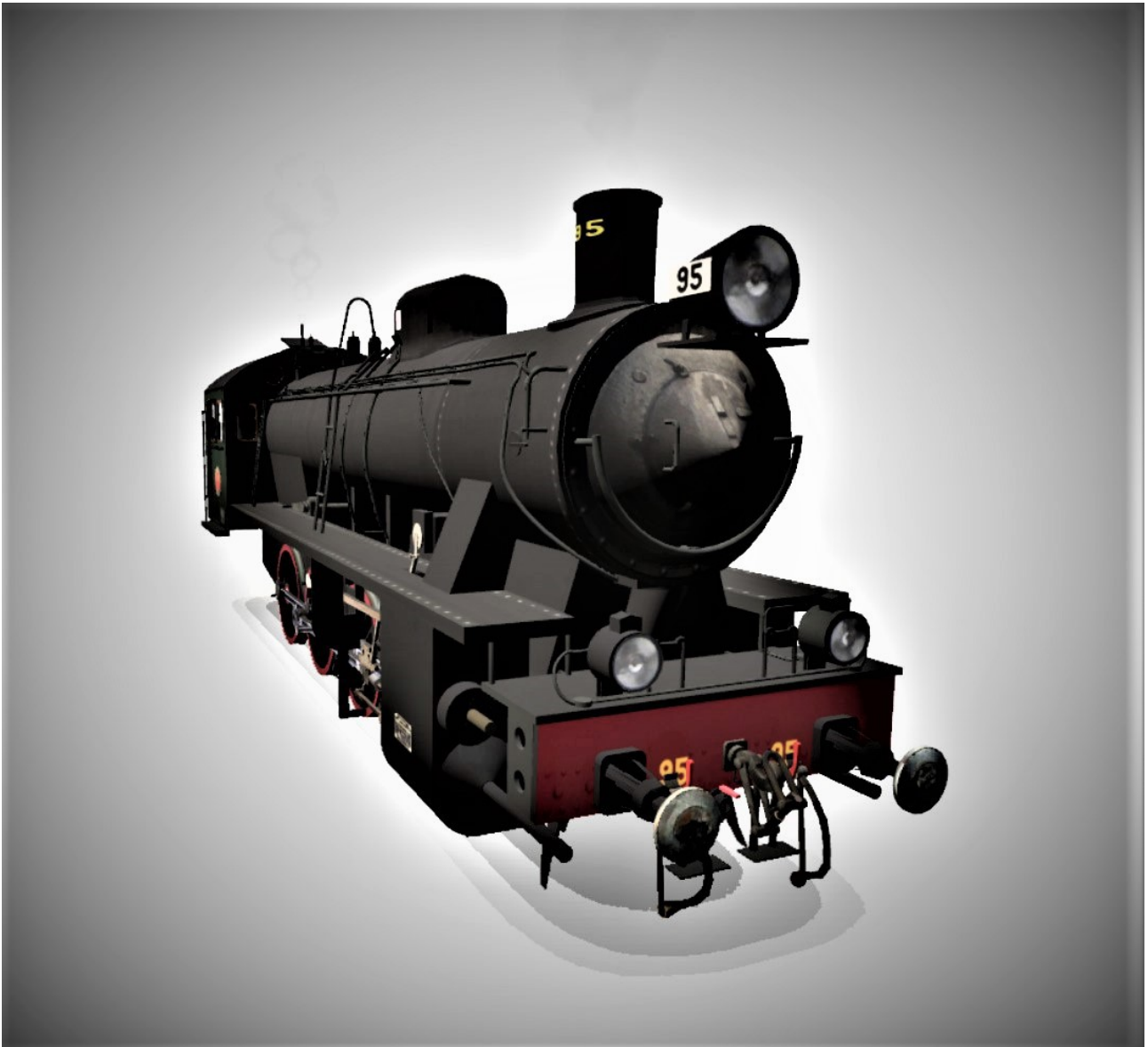
TGOJ Gb steam engine



This steam loco is for TANE or later versions.

The package includes features such as:

1. Toggle disconnect loco initiated from ctrl file or window menu => static (No sound, no smoke and no driver figure) and towable. Duration procedure appr. 4 minutes.*
 2. Toggle draincocks initiated from ctrl file or cabin
 3. Increase/decrease blower initiated from ctrl file or cabin.
 4. Ejector on initiated from ctrl file.
 5. Tough startup initiated from ctrl file or window.
 6. Open/close side/front doors/windows initiated from ctrl file.
 7. Toggle air-pump valve for air-pump on/off.
 8. Toggle generator valve.
 9. The loco may slip during acceleration phase, if train weight is larger than 200 tons.
Only valid in DCC mode.
 9. The loco radius rod is in correct position during forward/backward direction.
Only valid in DCC mode.
 10. Configurable as TGOJ Gb 95 or TGOJ Gb 96.
- * The driver is NOT disabled any more.



Surveyor mode

Below picture shows loco parameters that can be changed in Surveyor mode:



Note.

1. "staella av loket" = disconnect.
2. Tender also has parameters that can be changed.



Driver mode

Below picture shows loco parameters that can be changed in Driver mode:



Note.

1. You have to move the loco once, before some of the parameters will be accessible.
2. Tender also has parameters that can be changed.

DCC mode

Download below PDF file and you can study how to set up the ctrl file:

<http://www.mediafire.com/file/e9wrp5xjxhwvf6j/KonfigJoCommsCtrlFile.pdf/file>

Valid keyboard cmds for this loco:

alt-x Toggle disconnect loco. This procedure lasts for 4 minutes.

alt-f Toggle close/open front windows.

alt-v Toggle left cabin window/door.

alt-h Toggle right cabin door/window.

alt-d Toggle draincocks => smoke scenario

shift-i Starting ejector => smoke scenario

n Increase blower. (3 positions) => smoke scenario

shift-n Decrease blower. (3 positions) => smoke scenario

alt-t Tough start. Wait to start till safetyvalve sounds.

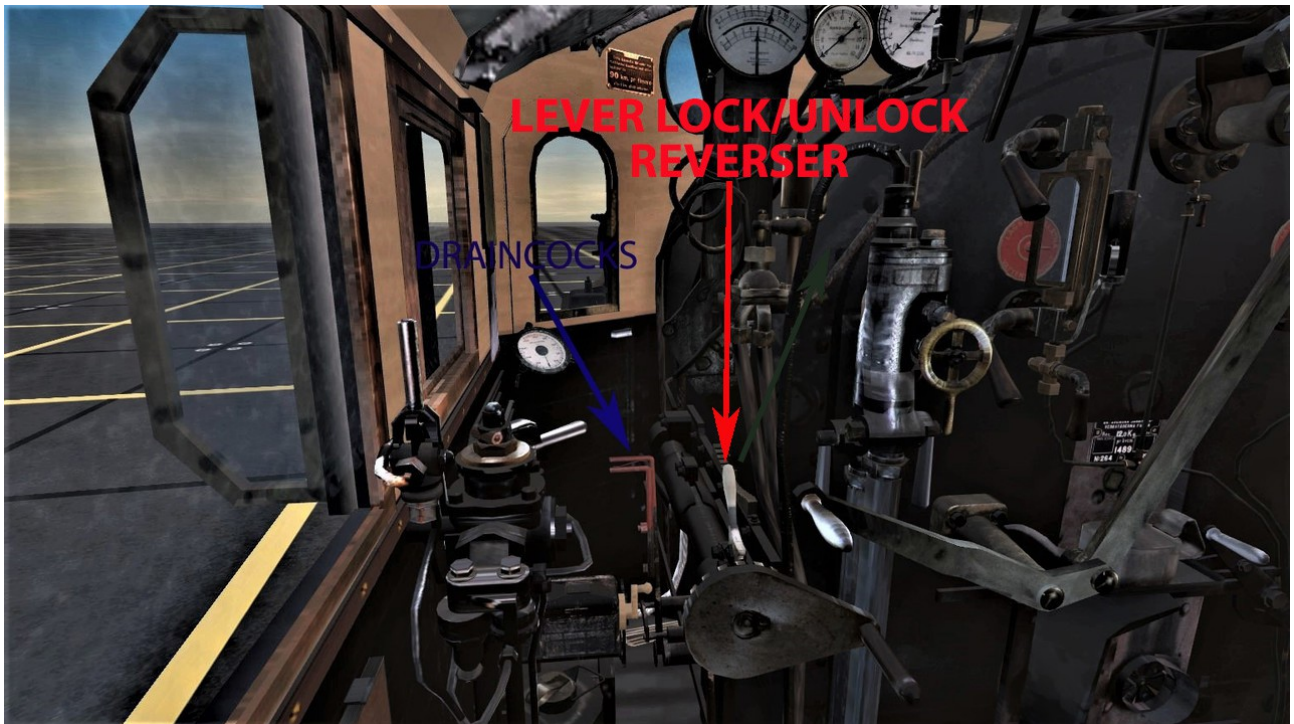
NOTE. Of course, the keys are also valid in Cabin mode.

Air pump is turned on when one or more cars are connected to the train.

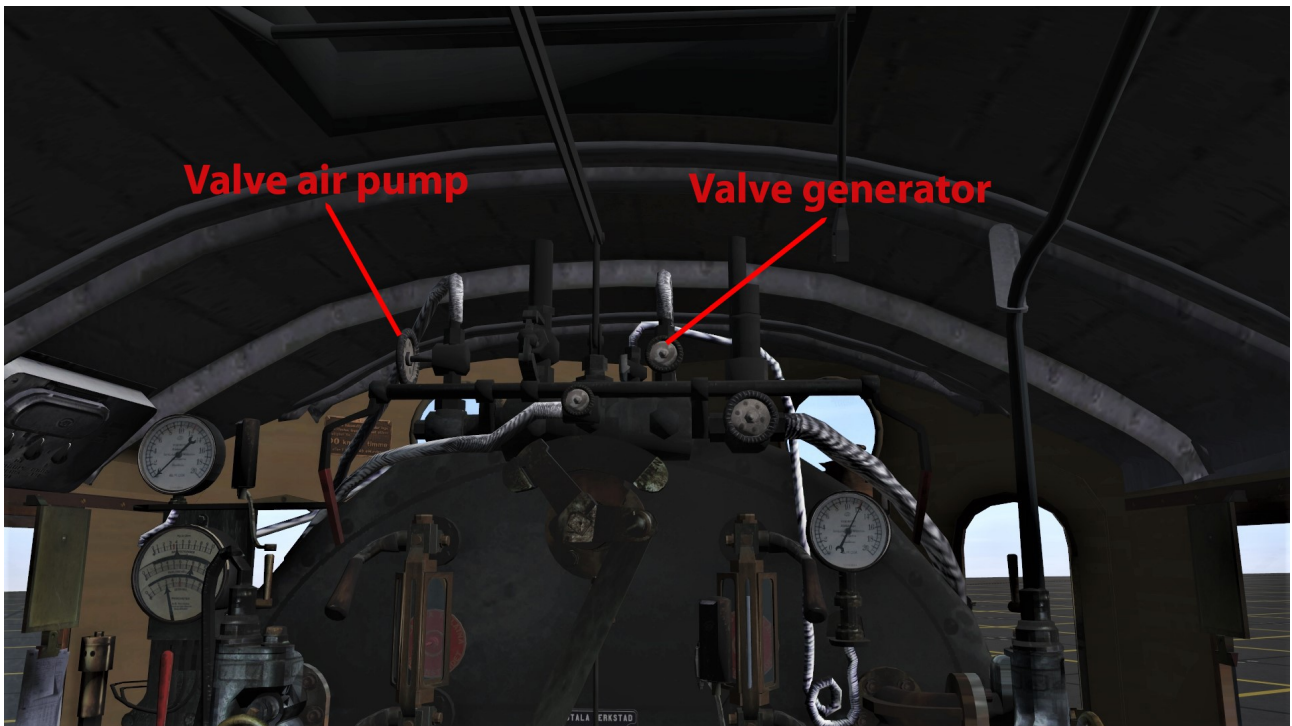
Generator is turned on/off by pressing the lamp sign or L-character.

Cabin mode

2 levers in cabin affecting the smoke amount:



Valves for generator and air pump:



NOTE. If driver forgets to turn on air pump and cars are connected to train, the loco will be disabled, i.e. not drivable



