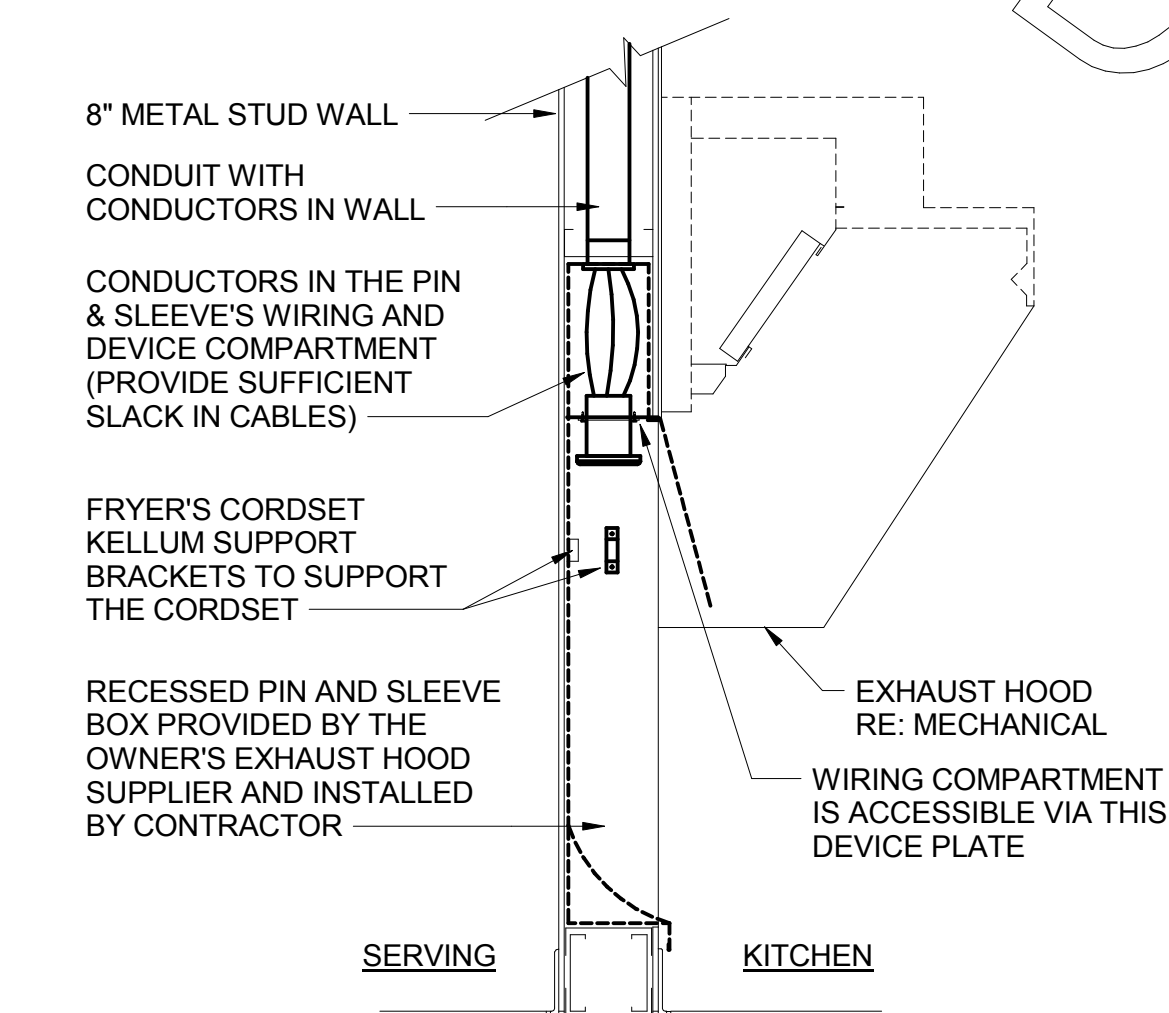
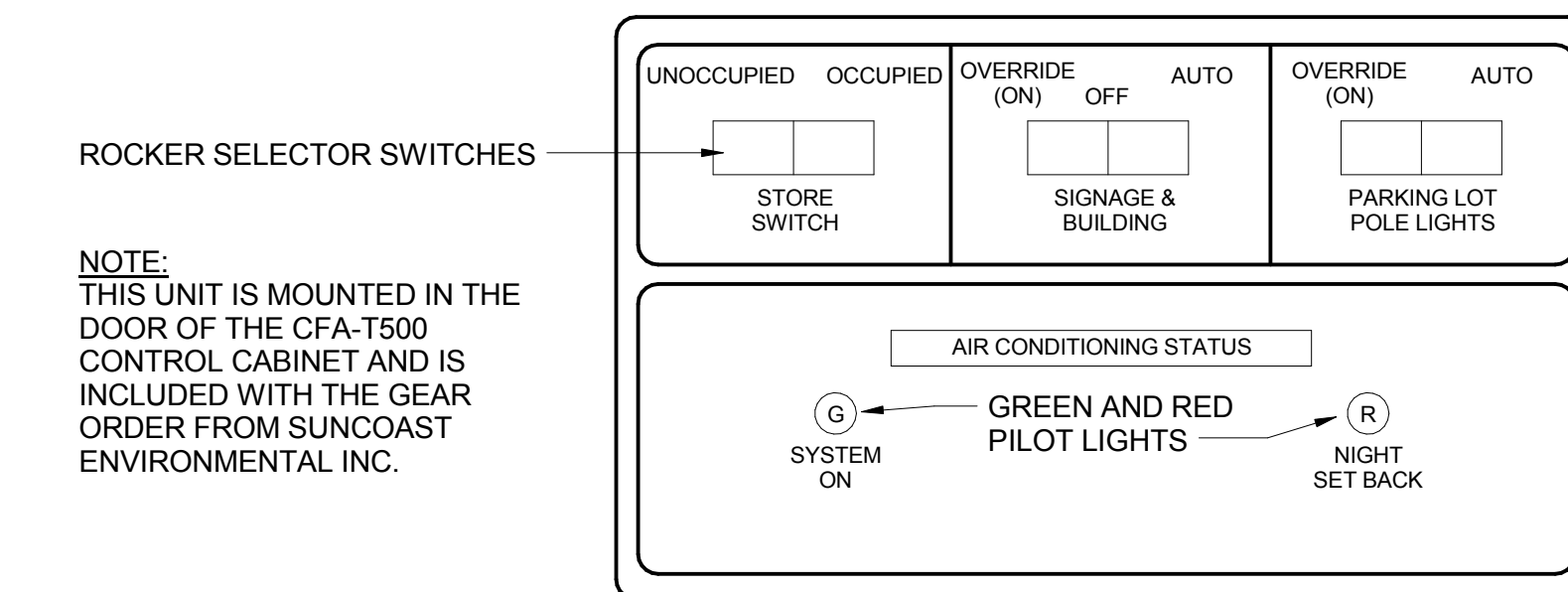


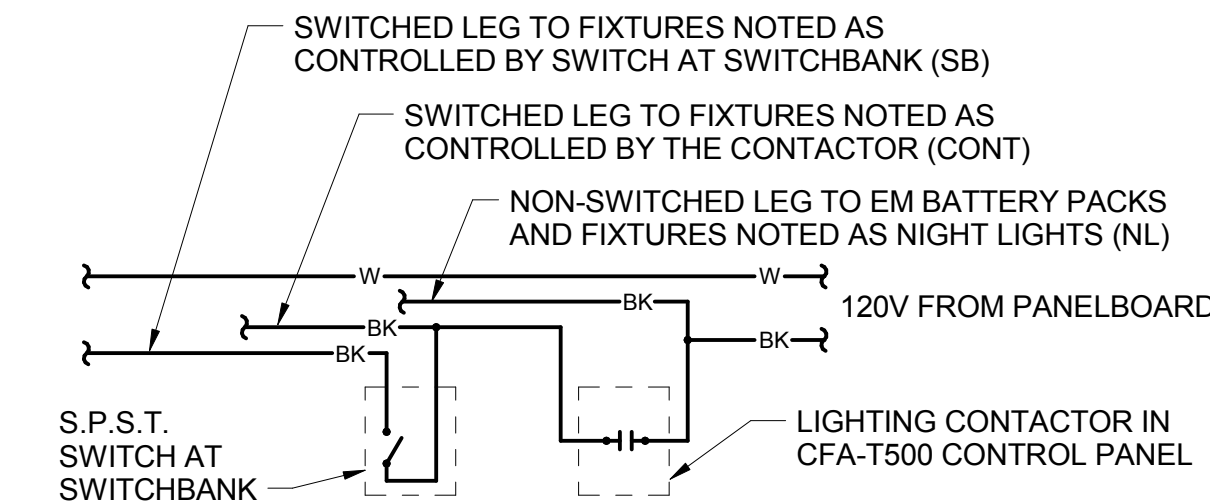
E3 HME UNIT POWER AND DATA BOX
NO SCALE



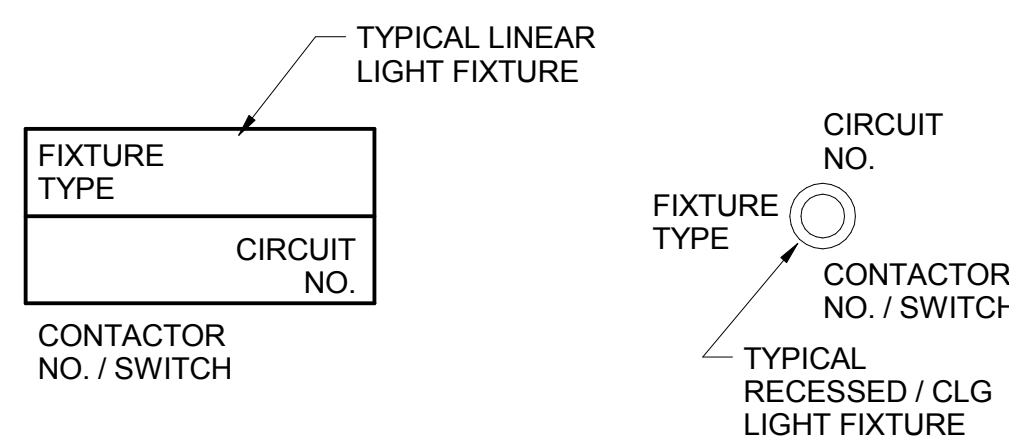
C4 PIN AND SLEEVE DETAIL
NO SCALE



B3 STORE OPEN-CLOSED STORE SWITCH CONTROL UNIT
NO SCALE



B4 LIGHTING CONTROL DIAGRAM
NO SCALE



A4 LIGHT FIXTURE NOMENCLATURE DETAIL
NO SCALE

SIGNAGE NOTE

THE ELECTRICAL SUBCONTRACTOR SHALL INCLUDE THE ELECTRICAL ROUGH-IN AND FINAL CONNECTIONS OF ALL SIGNAGE (BUILDING MOUNTED AND GROUND MOUNTED ON THE SITE) IN HIS SCOPE OF WORK AND UNDER HIS LOCAL CODE PERMITTING PROCESS. PROVIDE A COPY OF THE PERMIT (WHICH SPECIFICALLY INCLUDES THE SIGNAGE) TO THE SIGN VENDOR IN ORDER TO EXPEDITE THE SIGN VENDOR'S PERMIT PROCESS.

CIR C-1	CONTACTOR-1	30A 4-POLE	KITCHEN LTG
CIR C-3	120 VOLT COIL	(STORE SWITCH ON AND OFF)	KITCHEN LTG
CIR C-5			RESTROOM LTG
CIR C-11			DINING LTG
CIR C-7	CONTACTOR-2	30A 4-POLE	DINING LTG
CIR C-9	120 VOLT COIL	(STORE SWITCH ON AND OFF)	PLAY & SERV AREA LTG
CIR C-15			WATER RECIRC PUMP
CIR C-51			MLOP ORDERING
CIR C-43	CONTACTOR-3	30A 4-POLE	BLDG. SIGNAGE
CIR C-45	120 VOLT COIL	(P'CELL ON AND SWITCH OFF)	BLDG. SIGNAGE
CIR C-47			BLDG. SIGNAGE
CIR C-49			BLDG. SIGNAGE
CIR C-19	CONTACTOR-4	30A 4-POLE	DIRECTIONAL SIGNS
CIR C-37	120 VOLT COIL	(P'CELL ON AND SWITCH OFF)	MAIN ID SIGN
CIR C-39			MAIN ID SIGN
CIR C-41			MAIN ID SIGN
SPARE	CONTACTOR-5	30A 4-POLE	SPARE
CIR C-31	120 VOLT COIL	(P'CELL ON AND SWITCH OFF)	BLDG LIGHTING
SPARE			SPARE
SPARE			SPARE
SPARE	CONTACTOR-6	30A 4-POLE	SPARE
SPARE	120 VOLT COIL	(P'CELL ON AND SWITCH OFF)	SPARE
SPARE			SPARE
CIR C-21	CONTACTOR-7	30A 4-POLE	PARKING LOT LTG
CIR C-23	120 VOLT COIL	(P'CELL ON AND SWITCH OFF)	PARKING LOT LTG
CIR C-25			PARKING LOT LTG
CIR C-27			PARKING LOT LTG
SPARE	CONTACTOR-8	30A 4-POLE	SPARE
SPARE	120 VOLT COIL	(STORE SWITCH ON AND OFF)	SPARE
SPARE			SPARE
SPARE			SPARE
CIR C-29	CONTACTOR-9	30A 4-POLE	SECURITY/FLAG LTG
SPARE	120 VOLT COIL	(PHOTOCELL ON AND OFF)	SPARE
SPARE			SPARE
SPARE			SPARE
CIR A-36	CONTACTOR-10	30A 4-POLE	EXHAUST FAN EF-1
CIR A-38	120 VOLT COIL	(SWITCH ON & OFF, ANSUL ON)	EXHAUST FAN EF-2
CIR A-40			EXHAUST FAN EF-3
SPARE			SPARE
CIR C-54	CONTACTOR-11	30A 4-POLE	CAPTURE JET (CJ) FAN
SPARE	120 VOLT COIL	(SWITCH ON & OFF, ANSUL ON)	SPARE
SPARE			SPARE
SPARE			SPARE

NOTES:
1) VERIFY WITH SUNCOAST ENVIRONMENTAL CONTROLS' SHOP DRAWINGS.
2) ONLY THE "HOT" CONDUCTOR OF EACH CIRCUIT SHALL BE RUN THRU THE CONTACTOR.
3) ANY TAPS OR WIRING CONNECTIONS OTHER THAN TO THE TERMINALS SHALL BE DONE IN A JUNCTION BOX OUTSIDE OF THIS CABINET.
4) VERIFY WITH THE LOCAL CODE IF CONTACTORS #10 AND #11 WILL BE ON OR OFF WHEN THE ANSUL SYSTEM IS INITIATED.

C2 CFA-T500 CONTROL PANEL DIAGRAM
NO SCALE

ELECTRICAL LEGEND

SYMBOL	DESCRIPTION	MTG HT AFF TO CL	SYMBOL	DESCRIPTION	MTG HT AFF TO CL
LIGHTING FIXTURES			MISCELLANEOUS SYMBOLS		
□	SURFACE MOUNTED LIGHTING FIXTURE		⊕	GROUND	
⊞	RECESSED LED TROFFER LIGHTING FIXTURE		Ⓜ	MOTOR	
○	SURFACE MOUNTED LED LIGHTING FIXTURE		Ⓛ	EXHAUST FAN MOTOR	
○	RECESSED LED LIGHTING FIXTURE		Ⓛ	JUNCTION BOX	
⊞	WALL MOUNTED LIGHTING FIXTURE. SEE LIGHTING FIXTURE SCHEDULE		Ⓛ	CONDUIT AND WIRE "MARK" NUMBER, REFER TO CONDUCTORS AND CONDUIT SCHEDULE FOR SIZE	
⊞	WALL MOUNTED EXIT SIGN. SHADE INDICATES FACES. PROVIDE CHEVRON DIRECTIONALS WHEN NEEDED	AS NOTED 6" FROM CEILING TO TOP	Ⓛ	KITCHEN EQUIPMENT "MARK" NUMBER, REFER TO KITCHEN EQUIPMENT SCHEDULE FOR REQUIREMENTS	
⊞	CEILING MTD EXIT SIGN. SHADING INDICATES FACES. PROVIDE W/ CHEVRON DIRECTIONALS WHEN NEEDED		Ⓛ	NOTE NUMBER	
⊞	COMBO EXIT WITH TWO LAMP HEADS		Ⓛ	HOOD EXTINGUISHING ANSUL PULL STATION	
⊞	WALL MTD EMERGENCY BATTERY PACK LIGHTING FIXTURE	AS NOTED	Ⓛ	SMOKE DETECTORS REMOTE STATUS INDICATOR W/ 1/2" C STUB-UP	
⊞	CEILING MTD EMERGENCY BATTERY PACK LIGHTING FIXTURE		Ⓛ	PUSHBUTTON	
⊞	FLUORESCENT STRIP LIGHTING FIXTURE		Ⓛ	BELL, TYPE AS NOTED ON PLANS	
⊞	WALLWASHER TYPE RECESSED DOWNLIGHT, AIM LIGHT TOWARD WALL		Ⓛ	PHOTO-ELECTRIC CELL	
⊞	RECESSED LIGHTING FIXTURE W/ EMERGENCY BATTERY PACK		Ⓛ	TRANSFORMER / DRIVER	
⊞	PENDANT LIGHTING FIXTURE	AS NOTED	Ⓛ	LOCKABLE SINGLE POLE SWITCH	
⊞	LIGHTING TRACK WITH TRACK HEADS		Ⓛ	ABBREVIATIONS	
WIRING DEVICES			Ⓛ	ABOVE FINISHED FLOOR	
⊞	120 VOLT DUPLEX RECEPTACLE, 20 AMPS U.O.N.	14" UON	Ⓛ	ABOVE FINISHED GRADE	
⊞	120 VOLT DUPLEX AT SPECIAL MTD HEIGHT, 20 AMPS U.O.N.	44" UON	Ⓛ	AIR HANDLING UNIT	
⊞	120 VOLT QUADREX RECEPTACLE, 20 AMPS U.O.N.	14" UON	Ⓛ	CONDUIT	
⊞	120 VOLT QUAD. AT SPECIAL MTD HEIGHT, 20 AMPS U.O.N.	44" UON	Ⓛ	CENTER-LINE	
⊞	120 VOLT SIMPLEX RECEPTACLE, 20 AMPS U.O.N.	14" UON	Ⓛ	EXHAUST FAN	
⊞	SINGLE SPECIAL PURPOSE RECEPT W/ VOLTS, AMPS, & PHASE AS NOTED, NEMA CONFIGURATION AS REQUIRED BY EQUIP.	14" UON	Ⓛ	FULL LOAD AMPS	
⊞	RECEPTACLE MOUNTED ON DROP CORD, 120 VOLT, 20 AMP. UON, OUTLET BOX FLUSH WITH CEILING		Ⓛ	GROUND FAULT CIRCUIT INTERRUPTER	
⊞	SINGLE POLE TOGGLE SWITCH	48"	Ⓛ	GROUND	
⊞	DOUBLE POLE TOGGLE SWITCH	48"	Ⓛ	HEIGHT	
⊞	THREE WAY TOGGLE SWITCH	48"	Ⓛ	ISOLATED GRD, PROVIDE ORANGE DEVICE WHEN ADJACENT TO WIRING DEVICE	
⊞	MANUAL MOTOR STARTER SWITCH (WP=NEMA 3R)	48"	Ⓛ	MAXIMUM OVER-CURRENT PROTECTION	
⊞	SWITCH WITH PILOT LIGHT (ON WHEN SWITCH IS ON)	48"	Ⓛ	MAKE UP AIR UNIT	
⊞	KEY OPERATED SWITCH	48"	Ⓛ	LOCALLY ADOPTED EDITION OF THE NATIONAL ELECTRICAL CODE (NFPA 70)	
CONDUIT/RACEWAYS			Ⓛ	NIGHT LIGHT (ON 24 HOURS)	
⊞	CONDUIT CONCEALED ABOVE CEILING OR IN WALL		Ⓛ	ON CENTER	
⊞	CIRCUIT HOMERUN TO PANELBOARD W/ MIN 2#12, 1#12G, 3/4" C		Ⓛ	POINT OF SALE EQUIPMENT	
⊞	CONDUIT TURNING UP		Ⓛ	ROOF TOP UNIT	
⊞	CONDUIT TURNING DOWN		Ⓛ	TWIST-LOCK TYPE DEVICE	
⊞	CONDUIT CONCEALED IN OR BELOW SLAB (OUTSIDE = UNDERGROUND)		Ⓛ	TAMPER-RESISTANT	
⊞	FLEXIBLE LIGHT FIXTURE WHIP: SIX FOOT MAXIMUM LENGTH		Ⓛ	UNLESS OTHERWISE NOTED	
⊞	METAL CLAD CABLE ASSEMBLY - ONLY WHERE INDICATED ON DWGS OR SPECS		Ⓛ	WEATHERPROOF (NEMA 3R)	
DISTRIBUTION EQUIPMENT			Ⓛ	TELEPHONE	
⊞	NON-FUSIBLE SAFETY SWITCH, SIZE AND TYPE AS NOTED ON PLANS (AMP/POLES/ENCLOSURE) OR ON SCHEDULE. NEMA 1 ENCLOSURE UNLESS NOTED WP FOR NEMA 3R ENCLOSURE.	6'-6" **	Ⓛ	TELEPHONE OUTLET	18" UON
⊞	FUSIBLE SAFETY SWITCH, SIZE & TYPE AS NOTED ON PLANS (AMP/POLES/FUSE AMPS/ENCLOSURE) OR ON SCHEDULE. NEMA 1 ENCLOSURE UNLESS NOTED WP FOR NEMA 3R	6'-6" **	Ⓛ	TELEPHONE OUTLET AT SPECIAL MOUNTING HEIGHT	80" UON
⊞	FLUSH MOUNTED LIGHTING PANELBOARD	6'-6" **	Ⓛ	CCTV / SECURITY SYSTEM	
⊞	SURFACE MOUNTED LIGHTING PANELBOARD	6'-6" **	Ⓛ	SECURITY ALARM KEYPAD	
⊞	TRANSFORMER, PROVIDE SECONDARY GROUNDING PER NEC		Ⓛ	SECURITY SYSTEM KEY NOTE	
⊞	ENCLOSED CIRCUIT BREAKER, SIZE & TYPE AS NOTED (AMP/POLES/ENCLOSURE) NEMA 1 ENCLOSURE IF NOT NOTED, WP=NEMA 3R	6'-6" **			
* 6'-6" DISTANCE IS TO TOP-MOST DISCONNECTING DEVICE OR HIGHEST POSITION OF OPERATING HANDLE OF DISCONNECTING DEVICE					

LIGHTING FIXTURE (LUMINAIRE) SCHEDULE - CHICK-FIL-A P12 EDITION

NOTE: NOT ALL FIXTURE TYPES ARE USED IN ALL OF THE P12 BUILDINGS.

MARK	MANUFACTURER	CATALOG NUMBER	NO. LAMPS/TYPE	WATTS	VOLTS	MOUNTING	REMARKS
A	LITHONIA	2GTL-472L-A12125V-EZ1-LP840	INTEGRAL WITH FIXTURE	63.2	120	RECESSED	2X4' STATIC LED TROFFER RATED 7200 LUMENS, 4000K COLOR TEMP
AE	LITHONIA	2GTL-472L-A12125V-EZ1-LP840-EL-14L	INTEGRAL WITH FIXTURE	63.2	120	RECESSED	SAME AS 'A' WITH EMERGENCY BATTERY PACK. SEE PLAN NOTES ABOUT LAMP SWITCHING
B1	ILLUMITEX	CS1-24-4-DW-4-35-U-WH-W	INTEGRAL WITH FIXTURE	35	120	SURFACE	MOUNT LIGHT TO BTM OF OVERHEAD WIRE SHELVING WITH CORD & PLUG
D3	LITHONIA	LDN6-3020-LOGAR-120	INTEGRAL WITH FIXTURE	22.6	120	RECESSED	LED DOWNLIGHT WITH CLEAR REFLECTOR & TRIM RATED 2000 LUMENS, 3000K COLOR TEMP
D3E	LITHONIA	LDN6-3020-LOGAR-120-EL	INTEGRAL WITH FIXTURE	22.6	120	RECESSED	SAME AS D3 EXCEPT WITH EMERGENCY BATTERY PACK/INTEGRAL TEST SWITCH
D4	LITHONIA	LDN6-3020-LW6AR-120	INTEGRAL WITH FIXTURE	22.6	120	RECESSED	SAME AS D3 EXCEPT WITH WALLWASH REFLECTOR TRIM
F	MEYDA	30894-8 (144638)	1-SATS9238	12	120	CEILING	EGG LIGHT FURNISHED WITH A 12 WATT A19-GU24 LED LAMP
G1	LITHONIA	C-232-AL-MVOLT-GE810S-WSCUN	2-(GE)F28T8XL/SP935ECO	50	120	WALL	STRIP FLUORESCENT WITH LOW TEMP BALLAST AND WIREGUARD, MTD ABOVE DOOR FRAME
J	LITHONIA	CA-132-MVOLT-GE810S	1-(GE)F28T8XL/SP935ECO	25	120	WALL	MOUNT ABOVE DOOR FRAME
L	LITHONIA	VSL-232-MVOLT-OL-GE810S	2-(GE)F28T8XL/SP935ECO	50	120	SURFACE	LOW PROFILE DAMP LOCATION FLUORESCENT
MS	LEVITON	PS110-10W	N/A	4	120	WALL	MOTION SENSOR ON FLUSH BACKBOX, PROVIDE COVERPLATE W/ CENTER THREADED KNOCKOUT
N	MINIKA	4531-267B	1-LED1A19B27D	11	120	WALL	LAVATORY WALL SCONCE SHADE POINTED DOWN W/ LED LAMP & CL ON LAVATORY
P1	MEYDA	142776	2-LED1A19B27D	22	120	PENDANT	31" DIA PEACH BASKET PENDANT WITH BTM AT 6'-3" AFF ABV TABLE, 7'-6" OTHERWISE
P2	MEYDA	142777	1-LED1A19B27D	11	120	PENDANT	20" DIA PEACH BASKET PENDANT WITH BTM AT 6'-3" AFF ABV TABLE, 7'-6" OTHERWISE
Q	NOT USED	COKE PENDANT IS NOW A DÉCOR ITEM PROVIDED AND INSTALLED BY THE SEATING/DECOR VENDOR.					
U	BESA LIGHTING	BES00298-060	FURNISHED	7.5	120	PENDANT	RED FRIT GLASS, BRONZE CABLE & CANOPY, 6'-6" AFF
V	VISUAL COMFORT	SL29238Z	1-BULLED1A19B27D	11	120	WALL	BOSTON LIBRARY LIGHT, MOUNT BACKBOX AT 7'-2" AFF W/ 11 WATT A19 LED LAMP
XA	LITHONIA	LHOM-LED-R	INTEGRAL WITH FIXTURE	4.3	120	WALL	EXIT SIGN WITH BATTERY PACK AND TWO INTEGRAL ADJUSTABLE LAMP HEADS
XC	LITHONIA	AFN-BN-EXT (TWO LAMP UNIT)	INTEGRAL WITH FIXTURE	21	120	WALL	EXTERIOR WALL MOUNTED EMERGENCY LIGHTING UNIT, LOCATE NEAR EGRESS DOOR
XD	DUAL-LITE	LG250S	NONE	250	120	WALL	INVERTER UNIT FOR EXTERIOR EGRESS LTG; ON AT DUSK, OFF AT DAWN, ON DURING PWR OUTAGE
OA	PROGRESS LIGHTING	P5675-31 WITH P8759 TOP COVER LENS	2-(GE)LED12P30RW83025	24	120	WALL	5" DIAMETER, 14" HEIGHT, WET LOCATION, UPDOWN CYLINDER W/ 12 WATT PAR30 3K NFL LED LAMPS
OC	HUBBELL	FL-42L-95-4K7-N-K-U-OB (SEE NOTE 4)	INTEGRAL WITH FIXTURE	96	120	PIPE	FLOODLIGHT MTD ON GROUND ON 2" PIPE SUPPORT (BY OTHERS) AND AIMED AT FLAG AFTER DARK
OD	LITHONIA	DSKO-LED-40C-1000-40K SERIES	FURNISHED				
		(DISTRIBUTION TYPES TO BE DETERMINED BY THE REGIONAL TEAM SPECIFIC TO THE SITE.)					
OH	LITHONIA	L3LED-T24-40PA-TRMM-30K-90CRI	FURNISHED	11.2	120	RECESSED	4" DIAMETER LED DOWNLIGHT (DAMP LABEL) WITH CLEAR REFLECTOR
OJ	SECURITY LTG	RW9C-72L-3K-UD-U-OB	FURNISHED	25	120	WALL	UPDOWN LED EXTERIOR WALL SCONCE, SEE ELEVATIONS FOR MOUNTING HEIGHT
OK	HUBBELL	LNC-SLU-3K-3-1	FURNISHED	12.9	120	WALL	LED WALLPACK W/ CENTERLINE OF FIXTURE AT 8'-0" AFF 0'-0" (FINISH FLOOR LINE)

NOTES:

- LUMINAIRES UTILIZING DOUBLE-ENDED LAMPS AND CONTAIN BALLASTS THAT CAN BE SERVICED IN PLACE SHALL HAVE A DISCONNECTING MEANS EITHER INTERNAL OR EXTERNAL TO EACH LUMINAIRE PER NEC 410.130(G).
- THE LIGHTING FIXTURE PACKAGE IS AVAILABLE THROUGH A NATIONAL ACCOUNT PROGRAM. REFER TO THE ELECTRICAL SPECIFICATIONS SHEET, SECTION C16500 FOR VENDOR INFORMATION.
- THE ASTERISK (*) BESIDE THE FIXTURE MARK IN THE ABOVE SCHEDULE INDICATES THE FIXTURE IS A NON-PROTOTYPICAL LIGHT FIXTURE PER THE CFA NATIONAL P12 PROTOTYPE.
- IF TYPE OC IS GROUND MOUNTED IN LIEU OF ROOF MOUNTED, PROVIDE EITHER THE FLL-VISOR-OB (VISOR) OR THE FLL-LOUVER-SL (LOUVER) FOR GLARE CONTROL.



Chick-fil-A

5200 Buffington Road
Atlanta, Georgia 30349-2998

INTERPLAN

ARCHITECTURE
ENGINEERING
INTERIOR DESIGN
PROJECT MANAGEMENT

604 COURTLAND STREET
SUITE 100
ORLANDO, FLORIDA 32804
PH 407.645.5008
FX 407.629.9124

SEAL:
THIS SEAL IS THE PROPERTY OF INTERPLAN. IT SHALL REMAIN ON THE DRAWING AND BE USED TO VERIFY THE AUTHORITY AND SEAL OF THE SEALING ENGINEER.

CHICK-FIL-A

Cherokee Place

115 Cherokee Place, Cartersville, GA 30121

FSR# 00534

REVISION SCHEDULE
NO. DATE DESCRIPTION

CONSULTANT PROJECT # 2017.0149
PRINTED FOR BID
DATE 11.20.17
DRAWN BY MB

SHEET
ELECTRICAL SCHEDULES
AND DETAILS

SHEET NUMBER

E-001