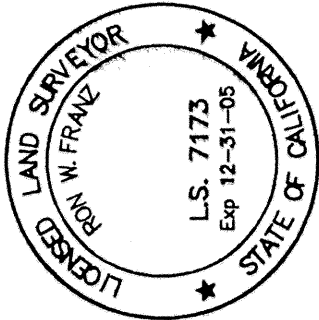


SURVEYOR'S STATEMENT

This map correctly represents a survey made by me or under my direction in conformance with the requirements of the Professional Land Surveyor's Act at the request of Naomi Mathieu in April, 2003.

Ron W. Franz 8-19-04
L.S. 7173
Ron W. Franz 12-31-05
License Expires:



LEGEND:

- Set 1/2" iron pipe with plastic plug stamped L.S. 7173
- Found monument as noted
- () Record data from the Penaat deeds recorded as Inst. No. 2003-13471, 13472, 13473, and 13474, MCR
- ()¹ Record data per MC 2, DR 1, PG 117, MCR
- ()² Record data per Maps, DR 67, PG 23, MCR

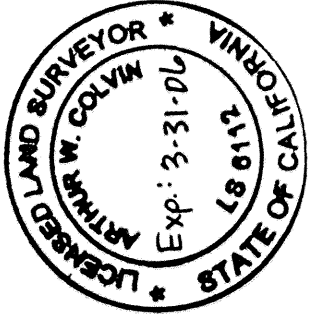
Bearings and distances agree with record unless otherwise noted.

COUNTY SURVEYOR'S STATEMENT

This map has been examined in accordance with section 8766 of the Professional Land Surveyor's Act this 24th day of AUGUST, 2004.

Arthur W. Colvin, County Surveyor
County of Mendocino, State of California

By Arthur W. Colvin
Arthur W. Colvin, LS 6112
License Expires 3-31-06

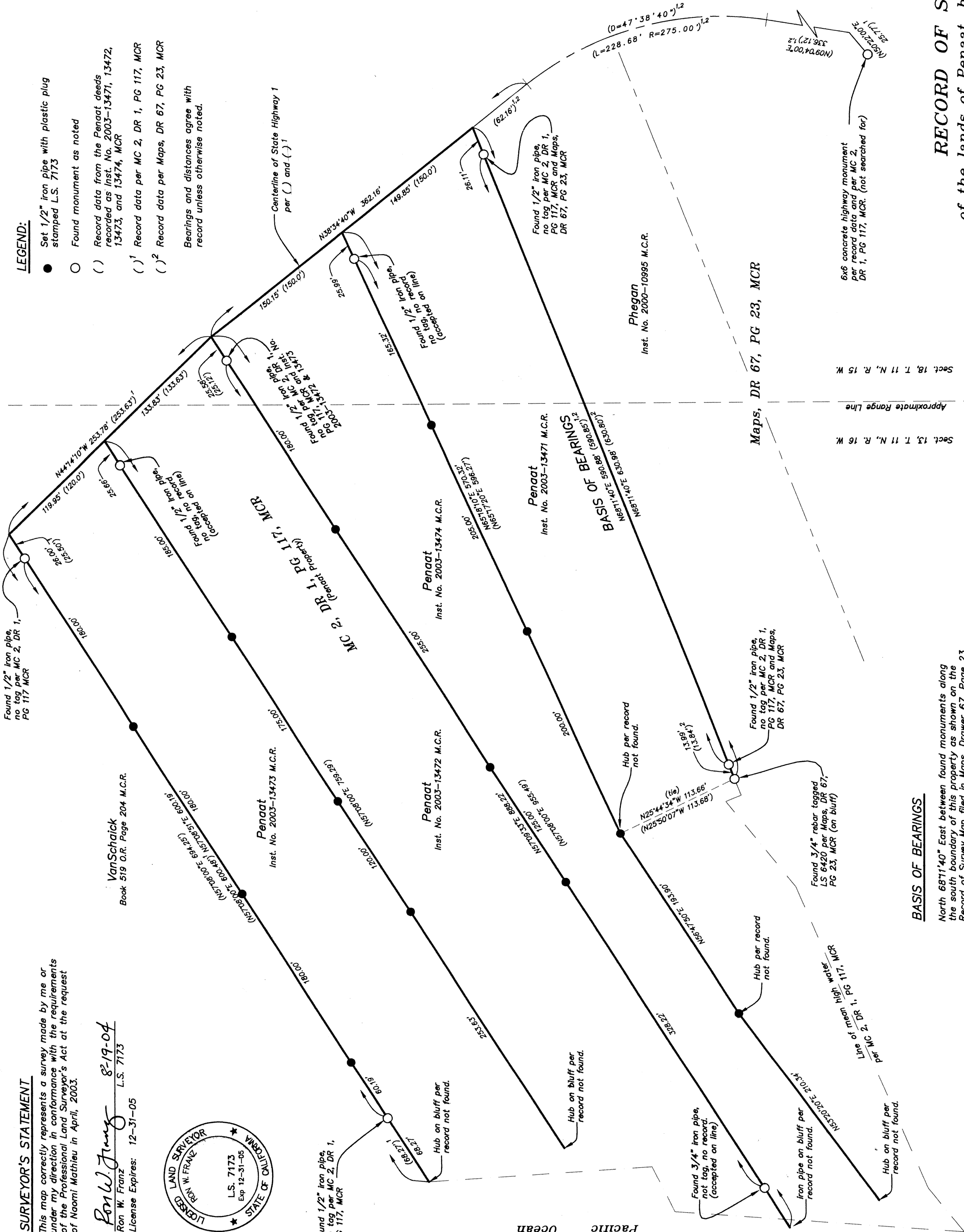


RECORDER'S STATEMENT

Filed this 26th day of Aug, 2004, at 9:21 A. M.
In Maps, Drawer 71, Page 79, M.C.R.
at the request of Ron W. Franz

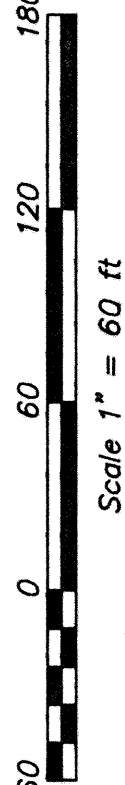
Marsha A. Wharf, County Recorder
Mendocino County, State of California

By Marsha A. Wharf, Deputy
FEE: \$22



BASIS OF BEARINGS

North 68°11'40" East between found monuments along the south boundary of this property as shown on the Record of Survey Map filed in Maps, Drawer 67, Page 23, Mendocino County Records



RECORD OF SURVEY

of the lands of Penaat, being portions of
Section 13, Township 11 North, Range 16 West
and Section 18, Township 11 North, Range 15 West,
Mount Diablo Meridian
Mendocino County, California May 2004

#166

ONE SHEET ONLY

--- MAPS ---

DRAWER 71

PAGE 79