

CORNER RECORD

Agency Index

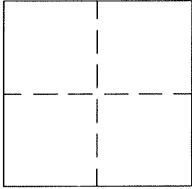
Bk 135 Pg 27

Document Number

CR 14033

City of BerkeleyCounty of Alameda

, California

Brief Legal Description B0617 City Monument, at intersection of McGee Ave. & Lincoln St.

CORNER TYPE

Government Corner ☐ Control ☒
Meander ☐ Property ☐
Rancho ☐ Other ☐

Date of Survey 12/03/2019

COORDINATES (Optional)

N: _____ E: _____

Elevation: 139.49' (B0617)Units: Metric ☐ U.S. Survey Foot ☒

Horizontal Datum _____

Zone _____ Epoch Date _____

Vertical Datum City of Berkeley (CoB)☐ Complies with Public Resources Code §§ 8801-8819☐ Complies with Public Resources Code §§ 8890-8902

PLS Act Ref:

☐ 8765(d)☒ 8771☐ 8773☐ Other:Corner/
Monument:☐ Left as found☒ Established☐ Rebuilt☐ Pre-Construction☐ Found and tagged☐ Reestablished☒ Referenced☒ Post-Construction

Narrative of corner identified and monument as found, set, reset, replaced, or removed:

☒ See sheet #2 for description(s): B0617-FOUND(1) 2" BRASS CAP STAMPED "CITY OF BERKELEY" IN MONUMENT WELL. SET PUNCH MARK IN FOUND BRASS CAP PER CORNER RECORD 13054. REFERENCE TIES WERE FOUND & MEASURED TO PERPETUATE EXISTING MONUMENT PURSUANT TO THE PLS ACT SECTION 8771 PRIOR TO CONSTRUCTION. NO CLAIM IS MADE REGARDING THE CORRECTNESS OF THE POSITIONS OF SAID MONUMENTS, NOR THE DIMENSIONAL RELATIONSHIP TO STREET CENTERLINES OR PROPERTY BOUNDARIES. ALL LINE & CURVE DATA SHOWN IS MEASURED UNLESS OTHERWISE NOTED.

SURVEYOR'S STATEMENT

This Corner Record was prepared by me or under my direction in conformance with

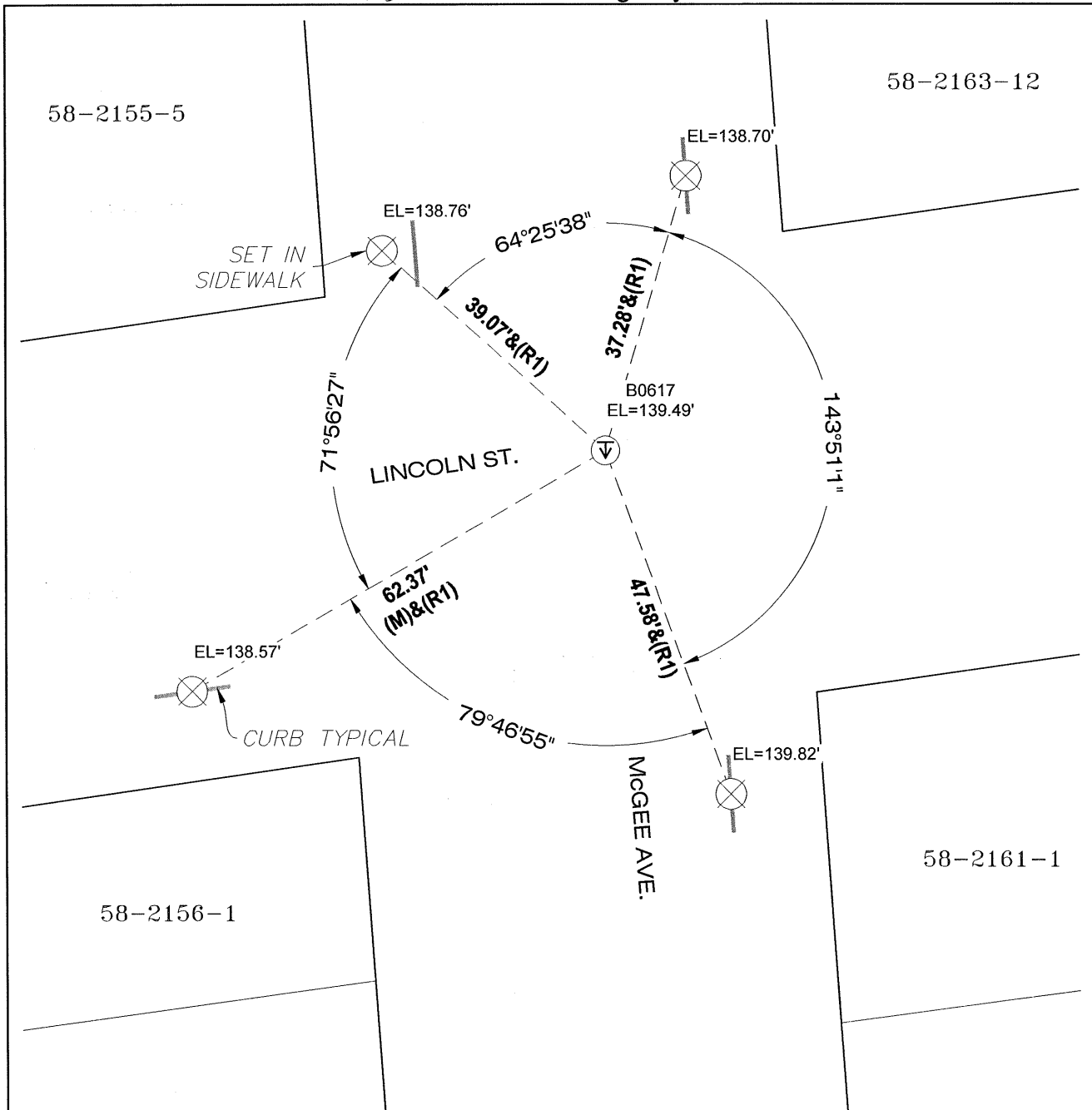
the Professional Land Surveyors' Act on December 12th, 2019.Signed Mark E. Reinhardt P.L.S. No. 6392

COUNTY SURVEYOR'S STATEMENT

This Corner Record was received MAY 18 2020and examined and filed MAY 18 2020Signed D. Ian Wilson P.L.S. or C.E. No. 7010Title ALAMEDA COUNTY SURVEYOR

County Surveyor's Comment





LEGEND

MONUMENT FOUND

⬇ (B0617) 2" BRASS CAP STAMPED "CITY OF BERKELEY" IN MONUMENT WELL

REFERENCE TIE FOUND

⊗ 1" BRASS DISK "PLS 6392", IN CURB, UNLESS NOTED OTHERWISE per (R1)

REFERENCE

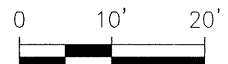
Corner Record 13054

AA##A# - ALAMEDA COUNTY MONUMENT ID

NOTES

Elevations on reference points were established using a Sokkia B20 Automatic 32X Level.

All line & curve data shown is measured unless otherwise noted.



SCALE: 1"=20'