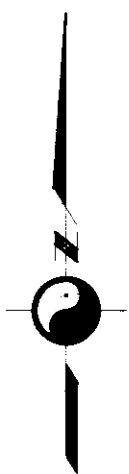


RECORD OF SURVEY NO. 31-53

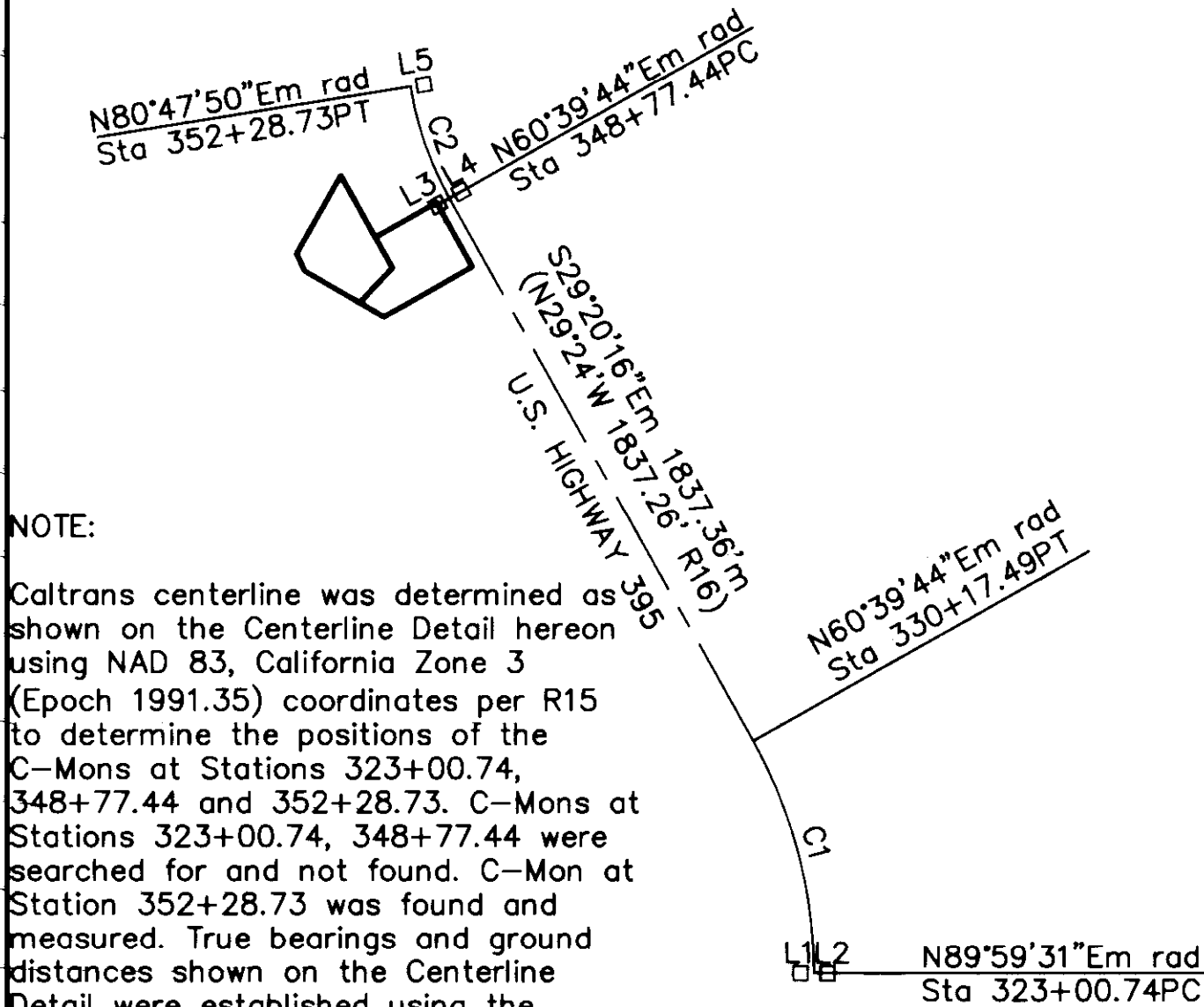
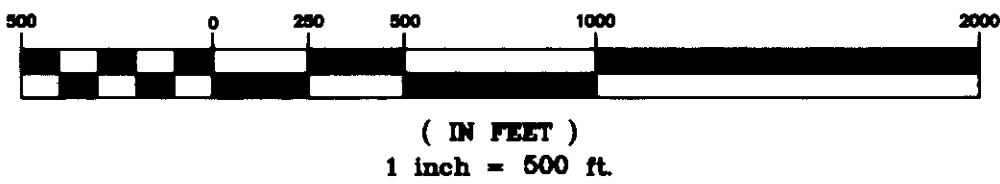
BEING A SURVEY OF PARCELS 1 & 2 OF LOT LINE ADJUSTMENT NO. 09-01
RECORDED AS DOCUMENT NO. 2009004081 AND BEING LOCATED IN A PORTION OF
THE NE1/4 OF THE SE1/4 OF SECTION 14, TOWNSHIP 9 NORTH, RANGE 22 EAST,
MOUNT DIABLO MERIDIAN, COUNTY OF MONO, STATE OF CALIFORNIA

LEGEND:

- Found 2-1/2" USGLO brass cap 6" below grade inscribed 1/4 S14 | S13 1941 Accepted as 1/4 Section Corner per R2.
- Set a 2" aluminum cap inscribed LS 5149 on a 5/8"x2' rebar in a rock mound.
- Fnd. 1-1/4" yellow plastic cap inscribed RCE 14741 on 5/8" rebar. No reference. Corners fall within acceptable survey tolerances for the locations of the property corners of Lot 10 per R7. Accepted as respective property corners.
- Control Point: Fnd. 1" metal cap inscribed PM115.9, 3" below grade, 3'± easterly from paddle marker.
- Fnd. 3/8" rebar in fenceline 4" below grade. Corner falls within acceptable survey tolerances for the location of the property corner per R4, R8 & R14. Accepted as property corner.
- Fnd. bent 3/8" rebar 3" above grade in line with and 1'± northeasterly from fence corner. Corner falls within acceptable survey tolerances for the location of the property corner per R4, R8 & R14. Accepted as property corner. Measurement taken where rebar enters ground.
- Fnd. 3/8" rebar in fenceline 4" below grade. Corner falls within acceptable survey tolerances for the location of the property corner per R10 & R11. Accepted as property corner.
- Fnd. 5/8" rebar 15" above grade. No reference. Location of bar is within acceptable survey tolerances for location of northerly corner of Lot 10 per R7 & R9. Accepted as property corner.
- Fnd. 1/2" rebar 3" below grade. Corner falls within acceptable survey tolerances for the location of the property corner per R7 & R9. Accepted as property corner.
- x Existing Fenceline
- R(*) Based on record information per (*)
- m Based on field measurements.



GRAPHIC SCALE



NOTE:

Caltrans centerline was determined as shown on the Centerline Detail hereon using NAD 83, California Zone 3 (Epoch 1991.35) coordinates per R15 to determine the positions of the C-Mons at Stations 323+00.74, 348+77.44 and 352+28.73. C-Mons at Stations 323+00.74, 348+77.44 were searched for and not found. C-Mon at Station 352+28.73 was found and measured. True bearings and ground distances shown on the Centerline Detail were established using the convergence angle and combined grid factor respectively as noted on the Basis of Bearings note on Sheet 1.

CENTERLINE DETAIL

HISTORY OF SURVEYS

- R1: Deed from Diego Carra and Mary Aristo to Mono County being recorded on May 23, 1942 in Volume 18, Page 121 of Official Records.
- R2: USGLO Dependent Resurvey and Survey of Township 9 North, Range 22 East, Mount Diablo Meridian examined and approved by the Acting Chief Cadastral Surveyor in Denver Colorado on January 6, 1947 and accepted by the Director in Washington D.C. on October 2, 1947.
- R3: Deed from Bess Fulstone to Joe G. Allard being recorded on June 14, 1955 in Volume 33, Page 389 of Official Records.
- R4: Deed from Joe G. Allard to W.E. and Harriet E. Earwaker recorded on March 30, 1960 in Volume 47, Page 29 of Official Records.
- R5: Ed Fulstone Subdivision being recorded on August 1, 1960 in Book 2 of Maps, Page 41.
- R6: Deed from Clarence H. Lindeman to J. G. Allard being recorded on November 16, 1960 in Volume 49, Page 143 of Official Records.
- R7: Correction Plat to- Ed Fulstone Subdivision being recorded on February 14, 1961 in Book 2 of Maps, Page 60.
- R8: Deed from Joe G. Allard to Bessie M. Edson recorded on July 10, 1964 in Volume 68, Page 575 of Official Records.
- R9: Deed from Barton and Margaret Fulstone to W.E. and Harriet E. Earwaker recorded on December 1, 1964 in Volume 71, Page 313 of Official Records.
- R10: Unrecorded Record of Survey Map Edson and Earwaker Parcels dated 1965. Map has been filed with the Mono County Department of Public Works.
- R11: Deed from William E. and Harriet E. Earwaker to Bessie Edson recorded on June 6, 1968 in Volume 94, Page 249 of Official Records.
- R12: Deed from Harriet E. Earwaker to Gerald D. Blanks and Sharon E. Blanks recorded on June 12, 1981 in Volume 328, Page 185 of Official Records.
- R13: Deed from Harriet E. Earwaker to Gerald D. Blanks and Sharon E. Blanks recorded on June 12, 1981 in Volume 328, Page 186 of Official Records.
- R14: Quitclaim Deed from William R. Earwaker and Dorothy Earwaker to Perry Lee Parker recorded on December 13, 1989 in Volume 545, Page 369 of Official Records.
- R15: Caltrans coordinate file: FILE: ANTELOPE.TXT
SR: 980185
EA: 28250
MNO 395 PM 106.36 - PM 120.5
on file in the Caltrans District IX, Office, Bishop, California.
- R16: Caltrans R/W Record Map lx-MNO-23-L, Sheet 7 on file in the Caltrans District IX, Office, Bishop, California.
- R17: Order Determining Succession of Property recorded on June 30, 2009 as Document No. 2009003204 in Official Records.

STA	NORTHING(R15)	EASTING(R15)	NORTHING m	EASTING m
PM115.9	2416841.045	6840472.027	2416841.045	6840472.027
1/4 S14 S13	2416053.521	6841119.423	2416053.720	6841119.274
323+00.74PC RT	2413163.579	6841885.693		
323+00.74PC LT	2413162.721	6841805.697		
348+77.44PC LT	2415418.827	6840707.616		
348+77.44PC RT	2415458.726	6840777.074		
352+28.73PT RT	2415774.317	6840662.888	2415771.298	6840666.658

NOTE: Record and measured coordinates shown in this table are grid coordinates.

CURVE TABLE			
CURVE	DELTA	RADIUS	LENGTH
C1	29°20'00"m	1400'm	716.75'm
	29°20'(R16)	1400'(R16)	716.75'(R16)
C2	20°08'06"m	1000'm	351.42'm
	20°08'(R16)	1000'(R16)	351.39'(R16)

LINE TABLE			
LINE	BEARING	LENGTH	
L1	N89°58'59"Em	40.01'm	40' (R16)
L2	N89°58'59"Em	40.01'm	40' (R16)
L3	N60°43'25"Em	40.06'm	40' (R16)
L4	N60°43'25"Em	40.06'm	40' (R16)
L5	N80°47'50"Em	39.93'm	40' (R16)