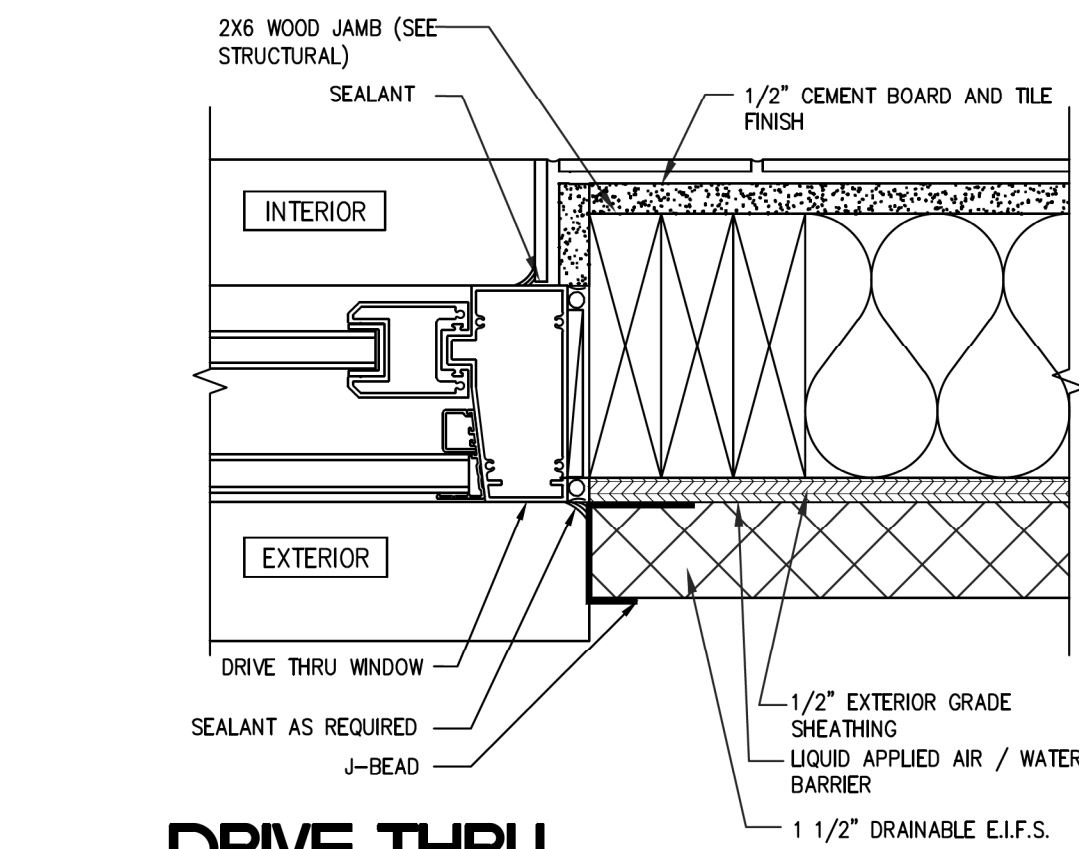
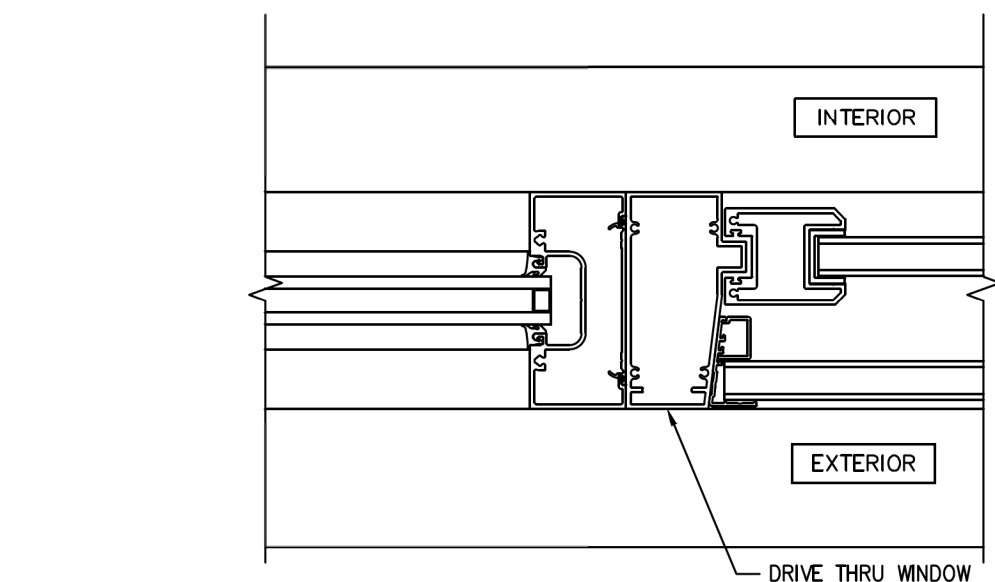


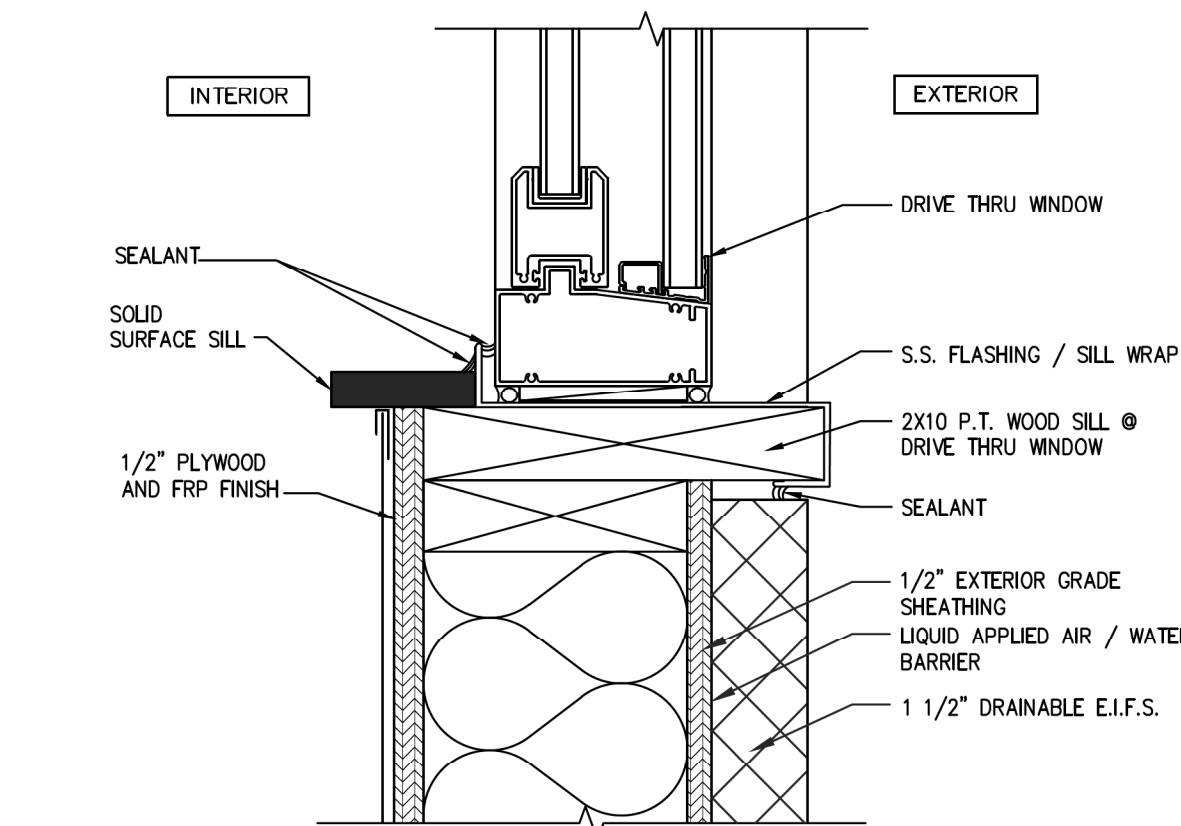
**1 DRIVE THRU WINDOW HEAD DETAIL**  
SCALE: 3"=1'-0"



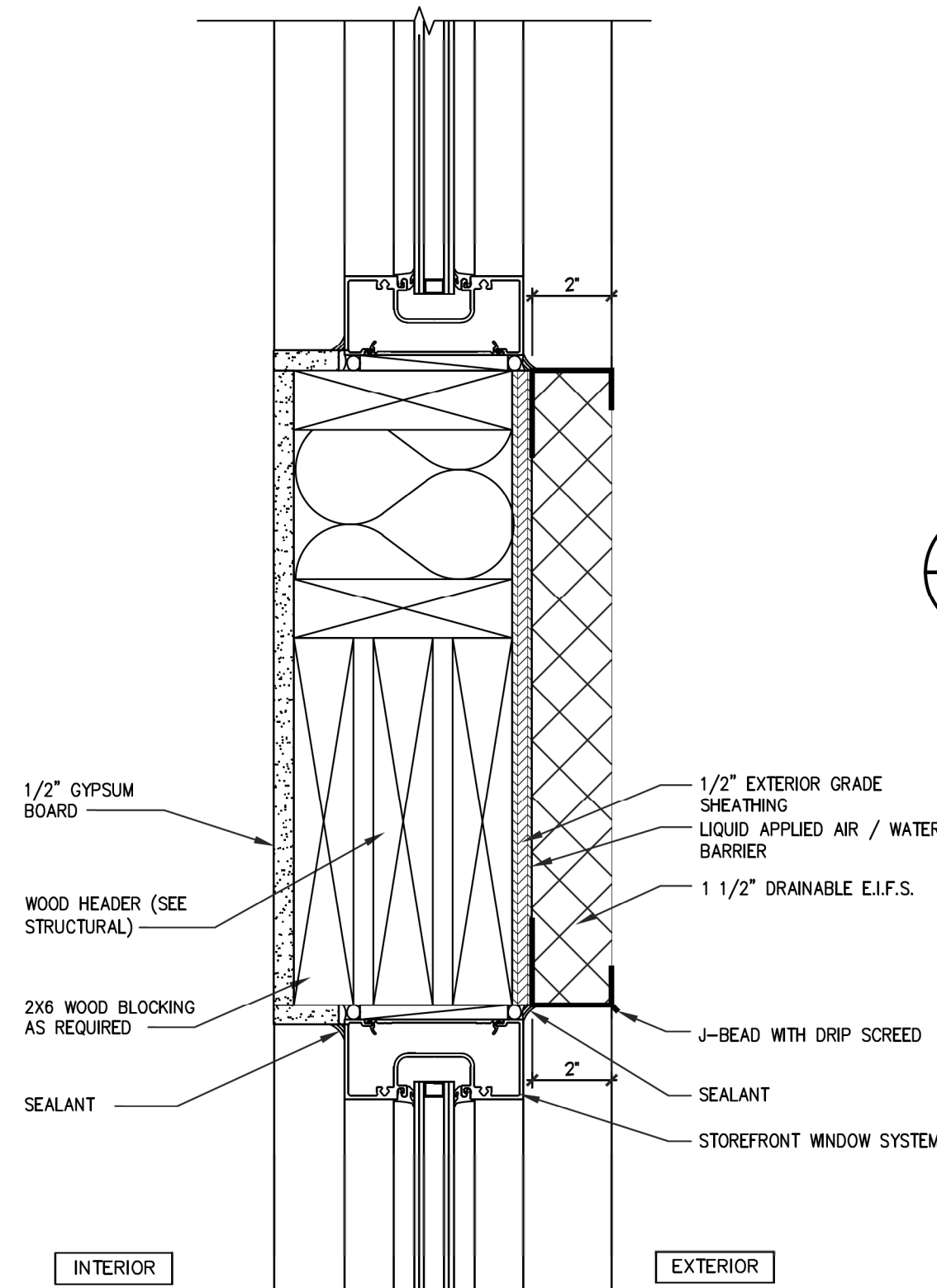
**2 DRIVE THRU WINDOW JAMB DETAIL**  
SCALE: 3"=1'-0"



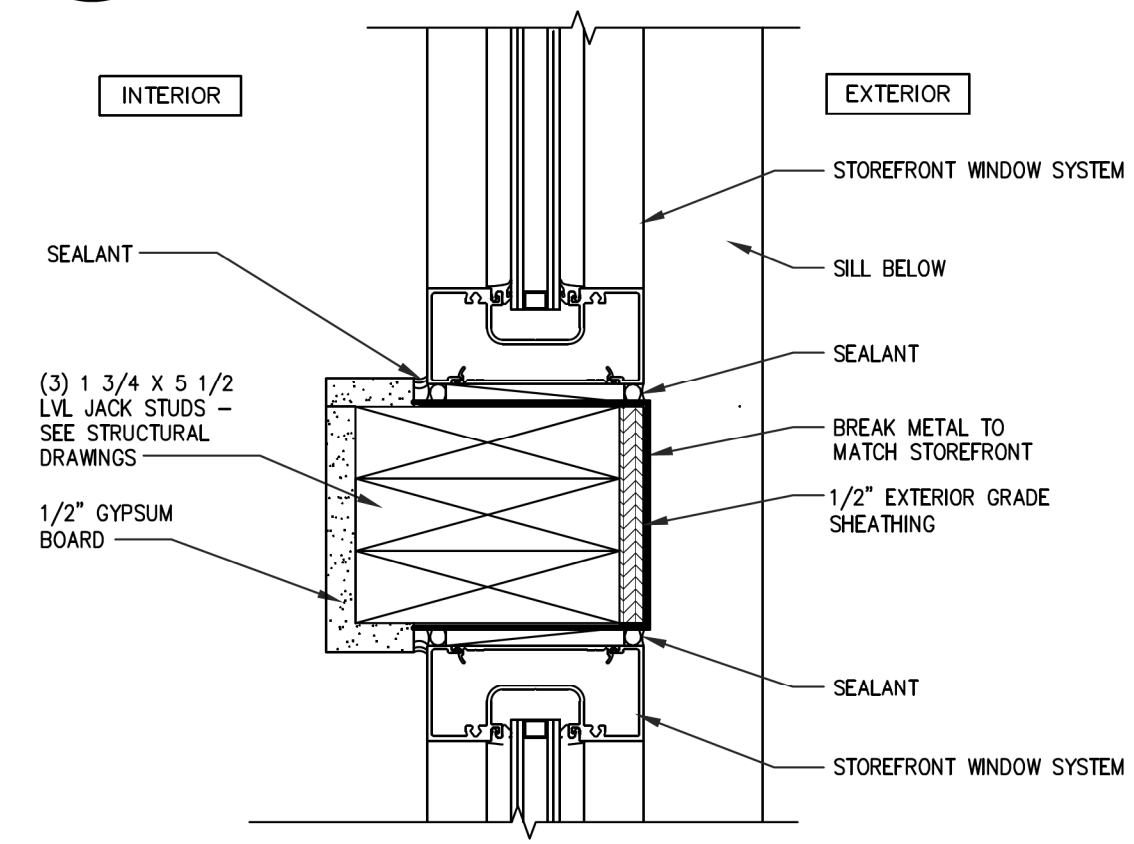
**3 DRIVE THRU / WINDOW JAMB**  
SCALE: 3"=1'-0"



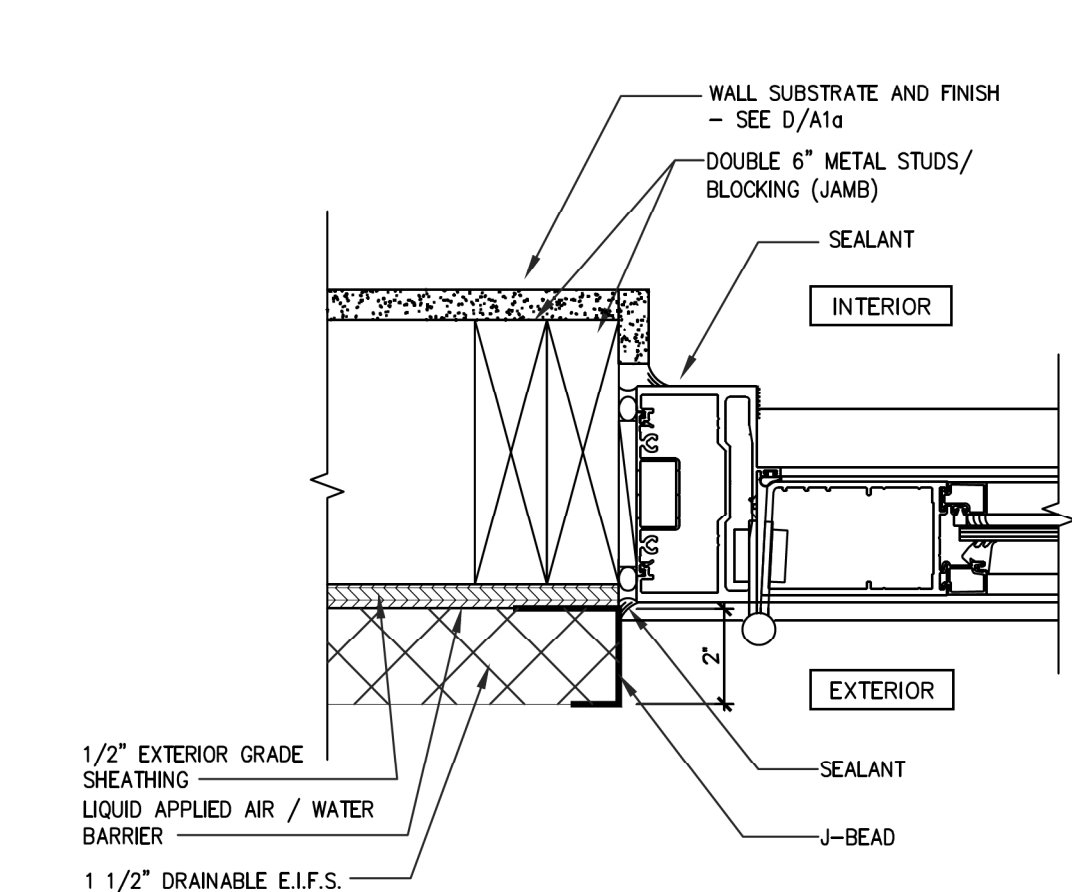
**4 DRIVE THRU WINDOW SILL DETAIL**  
SCALE: 3"=1'-0"



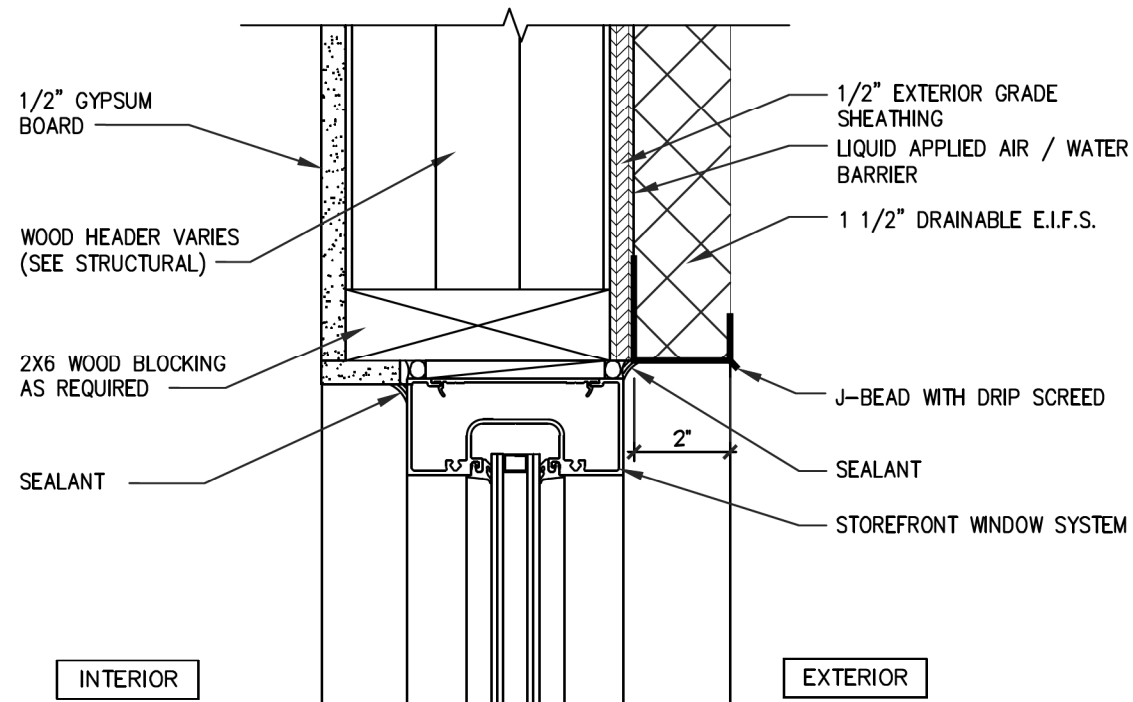
**5 HORIZ. HEADER AT STACKED WINDOWS**  
SCALE: 3"=1'-0"



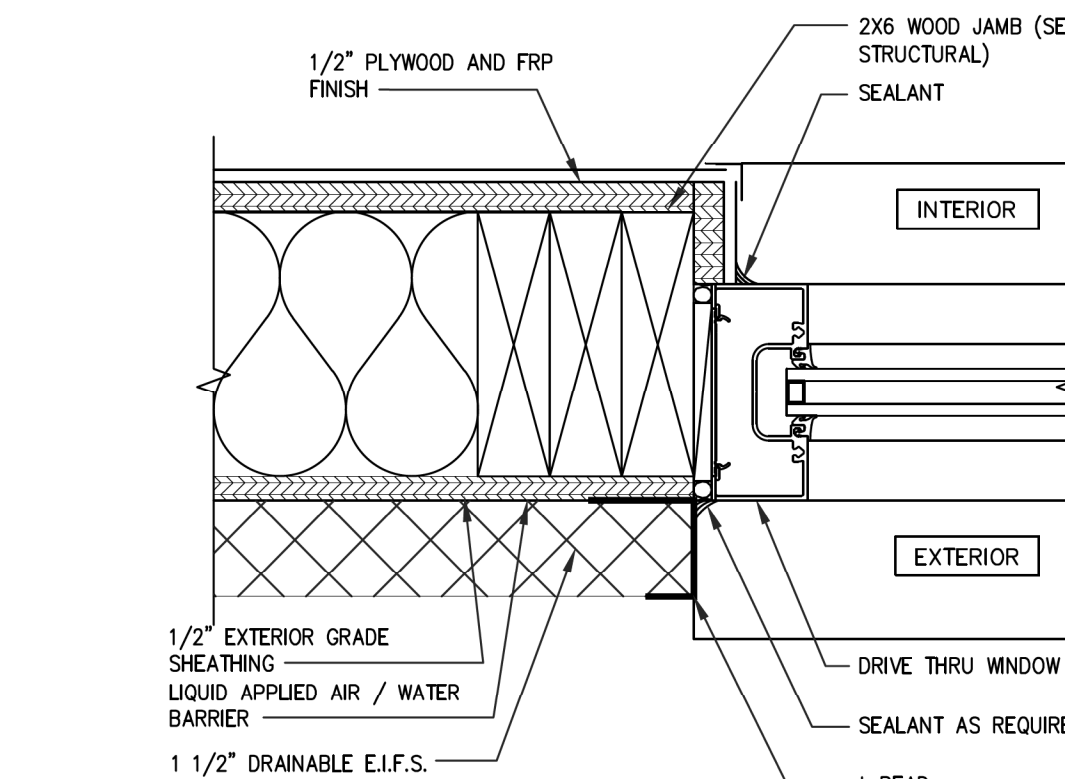
**6 VERTICAL WINDOW POST**  
SCALE: 3"=1'-0"



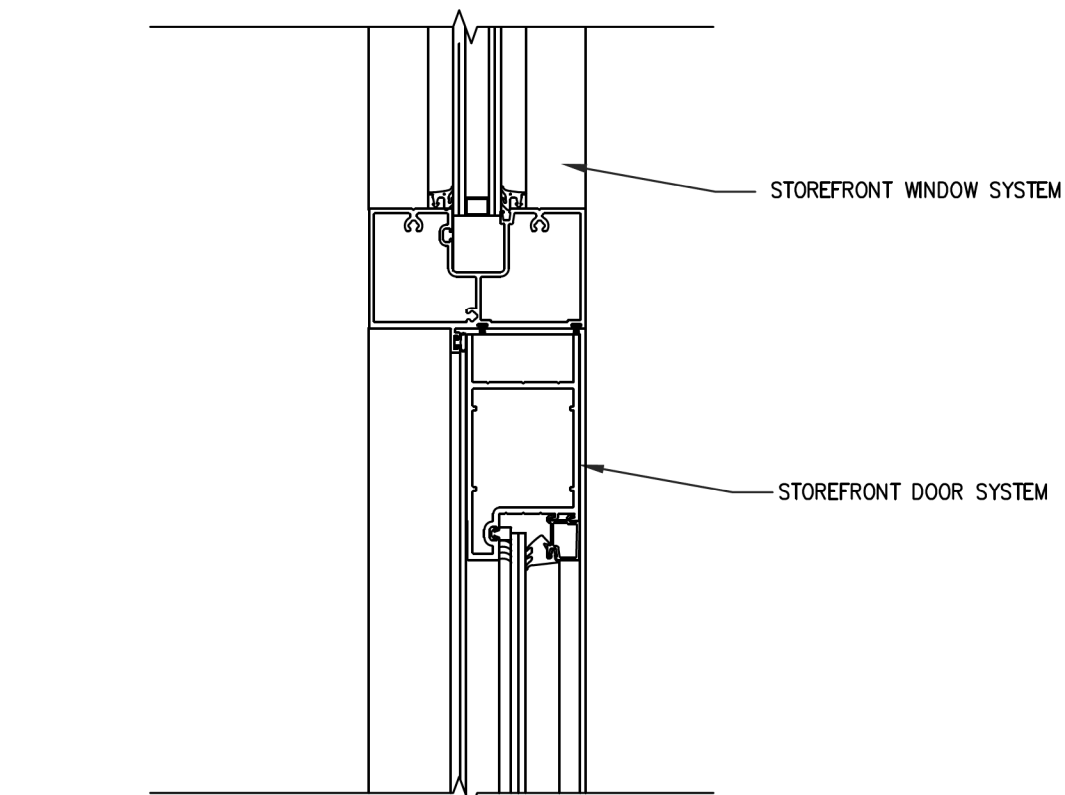
**7 STOREFRONT DOOR JAMB**  
SCALE: 3"=1'-0"



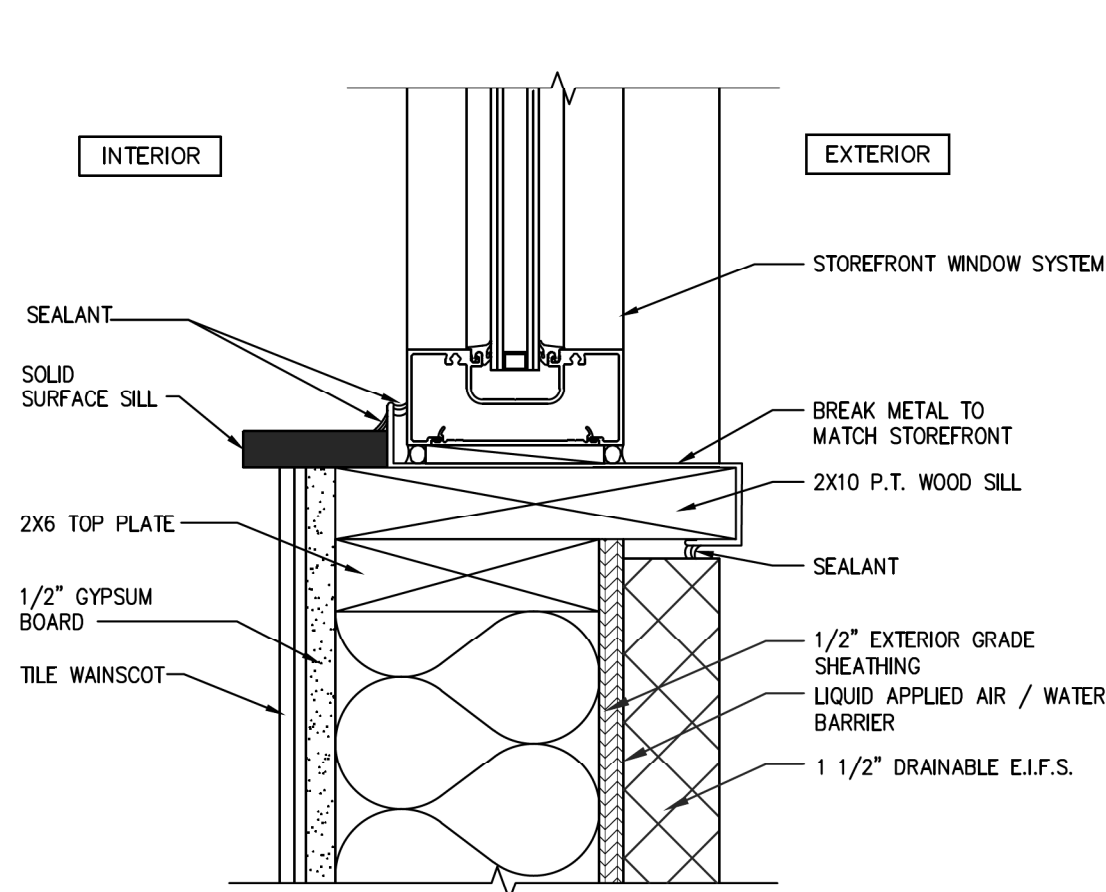
**8 STOREFRONT WINDOW HEAD**  
SCALE: 3"=1'-0"



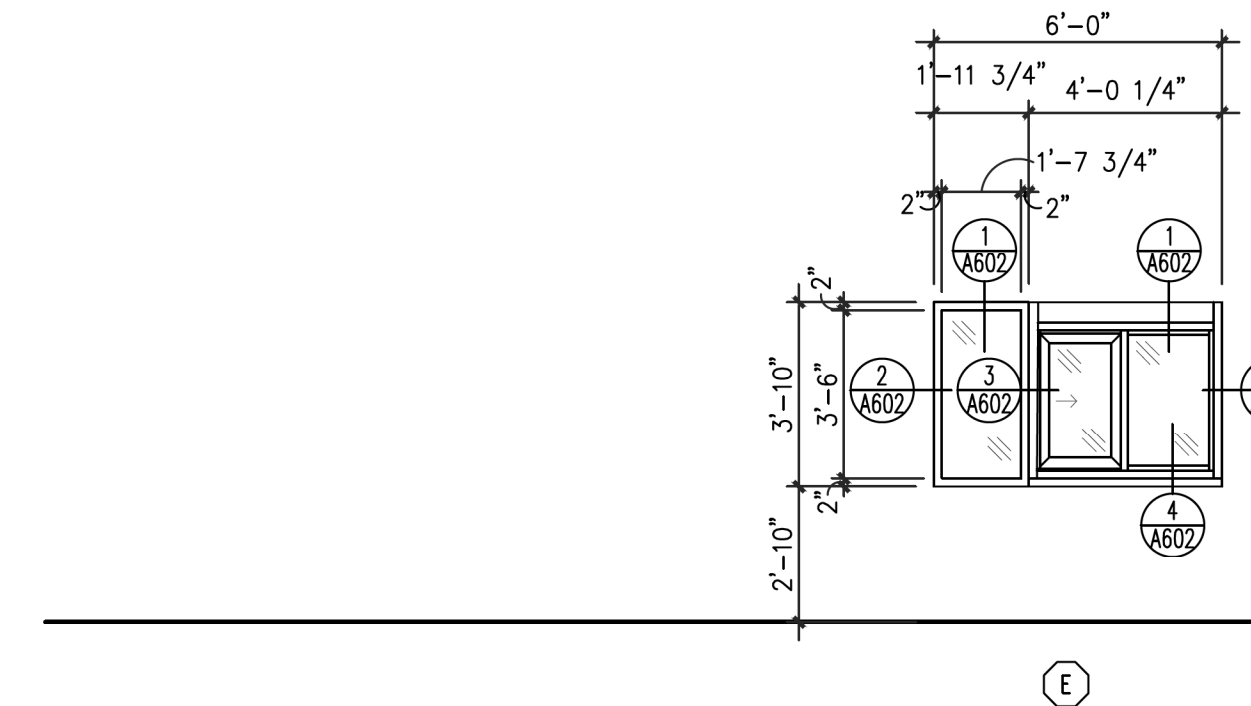
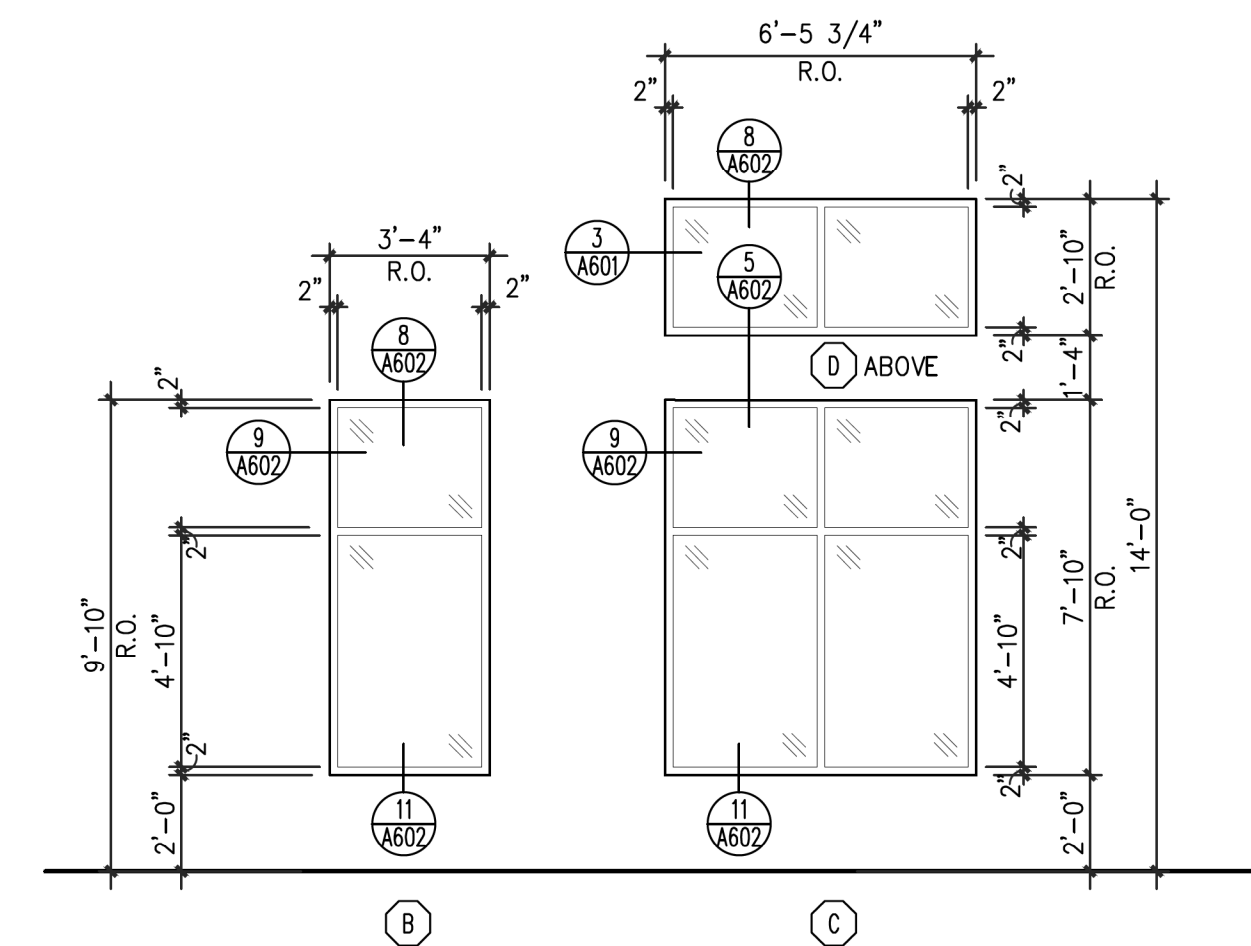
**9 STOREFRONT WINDOW SYSTEM JAMB DETAIL**  
SCALE: 3"=1'-0"



**10 VERTICAL WINDOW POST**  
SCALE: 3"=1'-0"



**11 STOREFRONT WINDOW SILL**  
SCALE: 1/4" = 1'-0"



**WINDOW TYPES**

**WINDOW SCHEDULE**

TYPE	SIZE - R.O.	MANUF / DESIGNATION	REMARKS
A	5'-6" x 7'-10"	YKK YES 45 CI	REFER TO ENERGY CODE SUMMARY FOR U VALUE AND SHGC
B	5'-6" x 2'-10"	YKK YES 45 CI	REFER TO ENERGY CODE SUMMARY FOR U VALUE AND SHGC
C	6'-0" x 7'-10"	YKK YES 45 CI	REFER TO ENERGY CODE SUMMARY FOR U VALUE AND SHGC
D	6'-0" x 1'-6" / 2'-10"	YKK YES 45 CI	REFER TO ENERGY CODE SUMMARY FOR U VALUE AND SHGC
E	12'-0" x 7'-10"	YKK YES 45 CI	REFER TO ENERGY CODE SUMMARY FOR U VALUE AND SHGC
F	8'-0" x 3'-8"	QUICKSERV IFSC 4040	REFER TO ENERGY CODE SUMMARY FOR U VALUE AND SHGC
G	12'-0" x 7'-10"	YKK YES 45 CI	REFER TO ENERGY CODE SUMMARY FOR U VALUE AND SHGC
H	3'-4" x SEE ELEVATION	YKK YES 45 CI	REFER TO ENERGY CODE SUMMARY FOR U VALUE AND SHGC

**GENERAL WINDOW NOTES**

- REFER TO MAUFACTURER SPECIFICATIONS FOR INSTALLATION REQUIREMENTS.
- ALL EXTERIOR STOREFRONT WINDOW SYSTEMS ARE TO BE 1" INSULATED GLAZING WITH SOLAR GRAY TINT. YKK - YES 45XT OR EQUAL
- ALL EXTERIOR STOREFRONT WINDOW SYSTEMS TO BE CLEAR ANODIZED ALUMINUM .
- PRIOR TO INSTALLATION, SUBMIT SHOP DRAWINGS TO ARCHITECT FOR REVIEW AND APPROVAL
- FIELD MEASURE ALL OPENINGS PRIOR TO FABRICATION. STOREFRONT SIZE AND LAYOUT SUBJECT TO FRAMING
- SEE A601 FOR DOOR / WINDOW ELEVATION AT EXIT.

**ABBREVIATIONS**

AL	ALUMINUM	MTL	METAL
AN	ANODIZED FINISH	PNT	PAINT
FAC	FACTORY FINISH	S&S	STAINED & SEALED
FBGL	FIBERGLASS	SCWD	SOLID CORE WOOD
GL	GLASS	STL	STAINLESS STEEL
HCWD	HOLLOW CORE WOOD	WD	WOOD
HM	HOLLOW METAL	WVC	WOOD VINYL CLAD
MDF	MEDIUM DENSITY FIBERBOARD		

LMHT Project No. 21318

THIS DRAWING IS THE PROPERTY OF THE ARCHITECT AND MAY NOT BE REPRODUCED OR USED WITHOUT THE ARCHITECT'S PERMISSION.

**INRD** national restaurant designers  
**ARCHITECTS & ENGINEERS**  
3005 Carrington Mill Blvd., Morrisville, NC 27560  
ph: 919 544 7251 fax: 919 544 9399  
A Division of LMHT Associates

**BRIAN L. JONES**  
REGISTERED ARCHITECT  
No.9372  
1.11.22

PROJECT: **HIGHWAY 55**  
30 PROTOTYPE  
1424 CURTIS BRIDGE ROAD  
WILKESBORO, NC 28697  
DRAWING: **DOOR WINDOW SCHEDULE**

**Revisions**

REVISION DATE

PROJECT DATE  
01/07/2022

Drawn By  
CIH

Checked By  
GRL

Sheet No.

**A602**