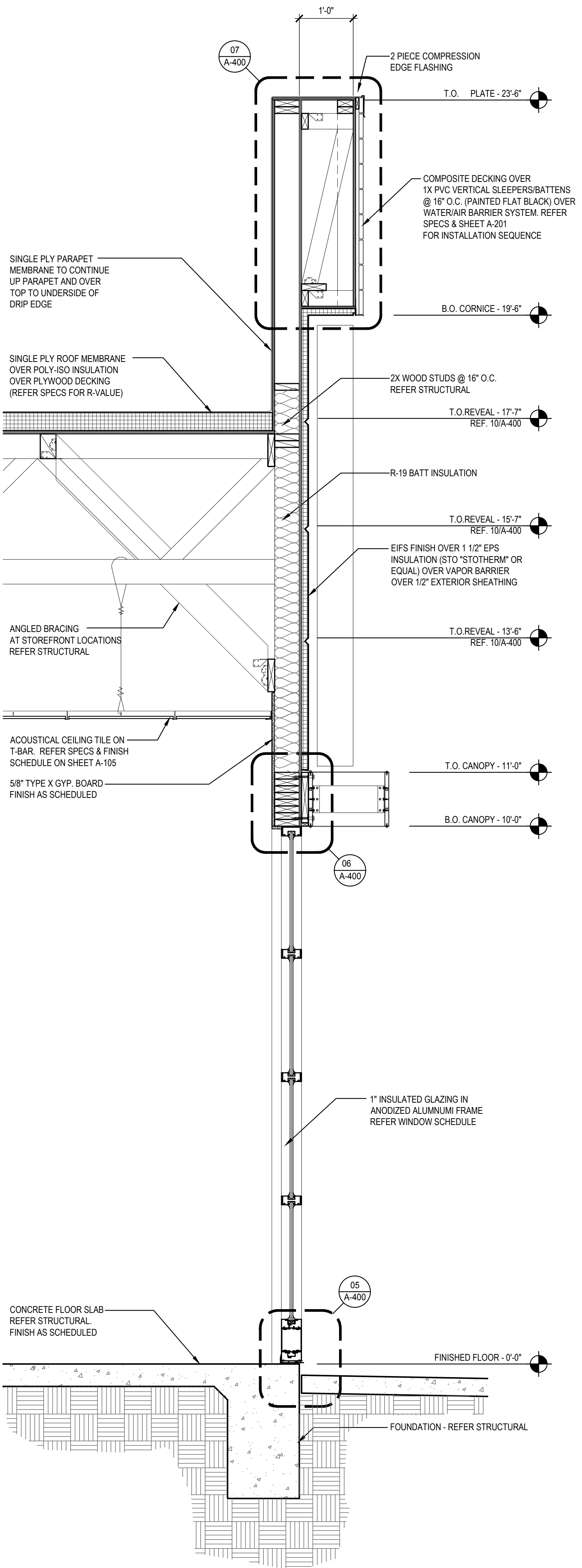
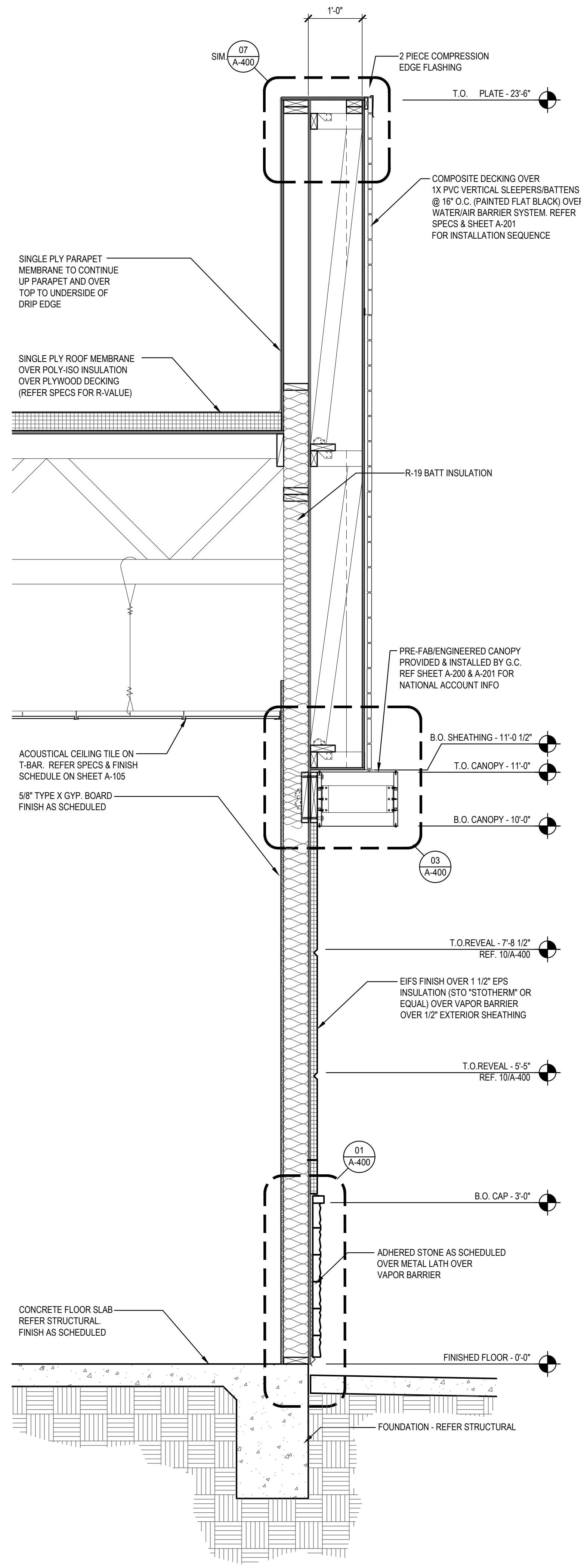


SECTION 1
Scale= 3/4" = 1'-0" A-302



SECTION 2
Scale= 3/4" = 1'-0" A-302



SECTION 3
Scale= 3/4" = 1'-0" A-302



PANDA EXPRESS, INC.
1683 Walnut Grove Ave.
Rosemead, California
91770
Telephone: 626.799.9898
Facsimile: 626.372.8288

All ideas, designs, arrangement and plans indicated or represented by this drawing are the property of Panda Express Inc. and were created for use on this specific project. None of these ideas, designs, arrangements or plans may be used by or disclosed to any person, firm, or corporation without the written permission of Panda Express Inc.

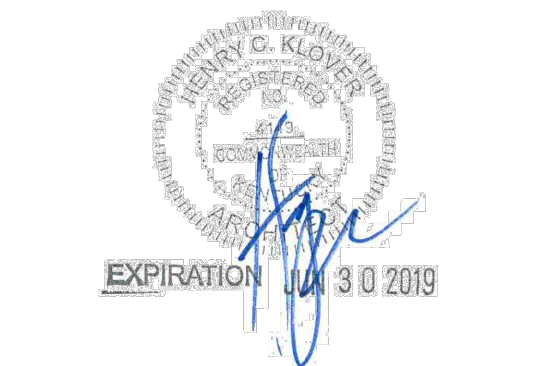
REVISIONS:

ISSUE DATE:

1st	PERMIT SET	10-5-18
2nd	BID SET	11-20-18

DRAWN BY:

PANDA PROJECT #: S8-19-D6462
ARCH PROJECT #: 18044.013



khckloverarchitect
10955 LOWELL AVENUE, SUITE 700
OVERLAND PARK, KS 66210
ph: 913.649.8181 • fx: 913.649.1275

PANDA EXPRESS
TRUE WARM & WELCOME 2200
Conestoga Pkwy & Historical Trail
Shepherdsville, KY, 40165

A-302

WALL SECTIONS

TRUE WARM & WELCOME 2200

BID SET 11.20.18